

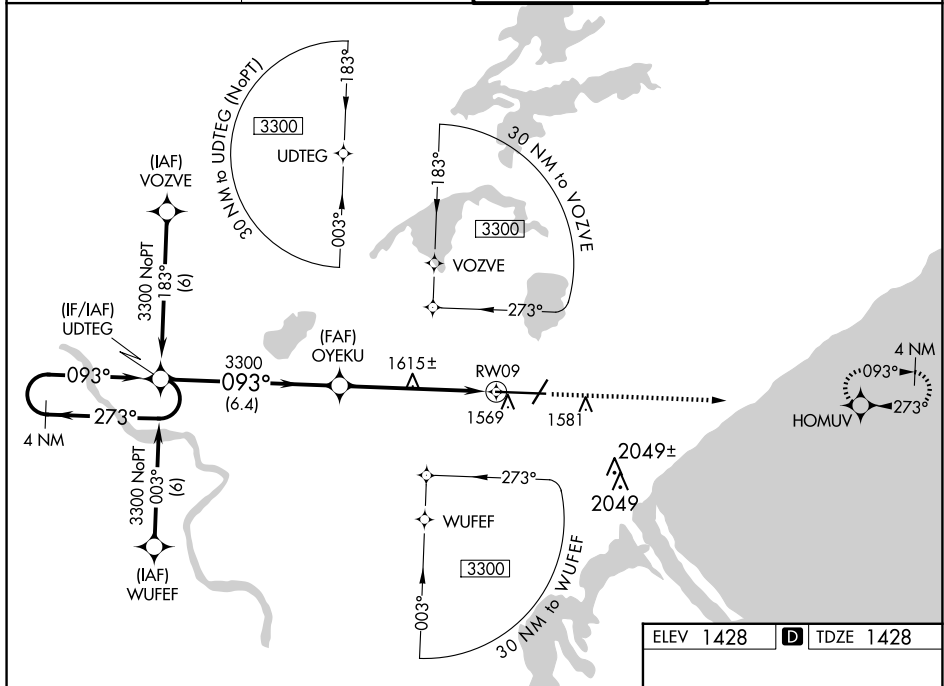


WAAS CH 90502 W09A	APP CRS 093°	Rwy Idg 10062 TDZE 1428 Apt Elev 1428
--	------------------------	--

RNAV (GPS) RWY 9
DULUTH INTL (DLH)

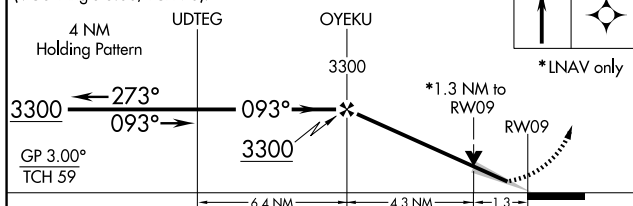
 ASR	For uncompensated Baro-VNAV systems, LNAV/VNAV NA below -17°C (2°F) or above 46°C (115°F). DME/DME RNP-0.3 NA. Circling NA for Cat E southeast of Rwy 3/27. For inop ALS, increase LPV Cat E visibility to ¾ SM, LNAV/VNAV all Cats visibility to 1½ SM and LNAV Cat E visibility to 1½ SM.	ALSF-2 	MISSED APPROACH: Climb to 4000 direct HOMUV and hold.
--	---	---	---


ATIS 124.1 270.1	DULUTH APP CON 125.45 233.7	DULUTH TOWER 118.3 257.8	GND CON 121.9 348.6
----------------------------	---------------------------------------	------------------------------------	-------------------------------



ELEV 1428	D	TDZE 1428
-----------	----------	-----------

VGSI and RNAV glidepath not coincident (VGSI Angle 3.00/TCH 70).



CATEGORY		A		B		C		D		E	
LPV	DA	1628/18 200 (200-½)									
LNAV/ VNAV	DA	1860/50 432 (500-1)									
LNAV	MDA	1880/24 452 (500-½)				1880/40 452 (500-¾)		1880/50 452 (500-1)			
 CIRCLING		1880-1 452 (500-1)		1900-1 472 (500-1)		1940-1½ 512 (600-1½)		2400-3 972 (1000-3)			

