




DULUTH, MINNESOTA

AL-125 (FAA)

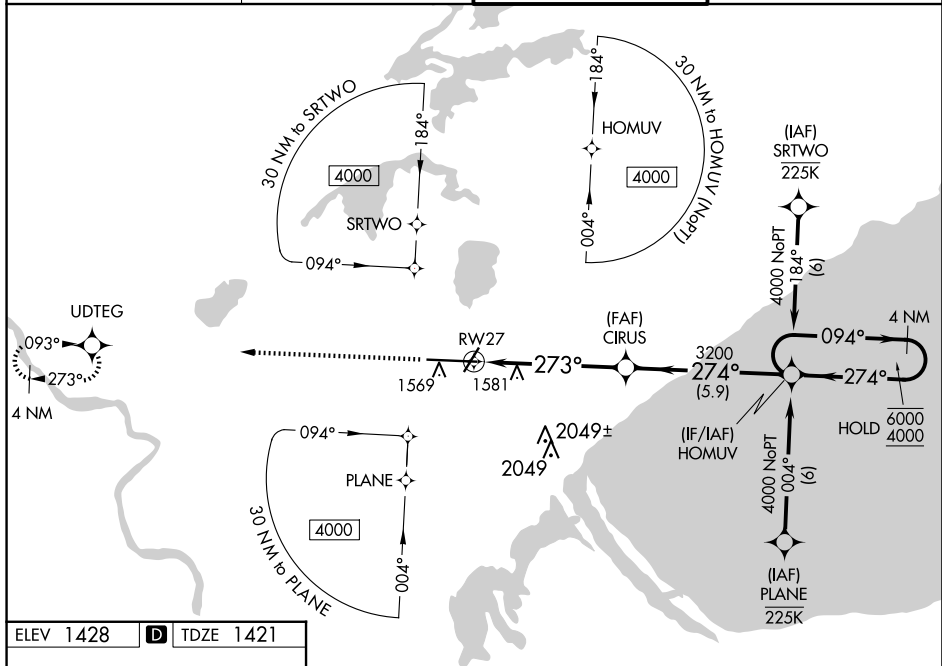
24305

WAAS CH 50502 W27A	APP CRS 273°	Rwy Idg 10062 TDZE 1421 Apt Elev 1428
--	------------------------	--

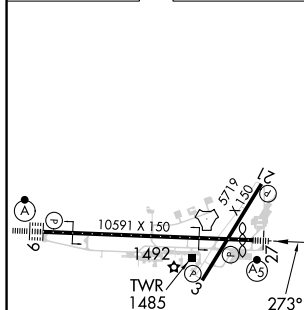
RNAV (GPS) RWY 27
DULUTH INTL (DLH)

RNP APCH.		MALSR		MISSED APPROACH: Climb to 3300 direct UDTEG and hold.
  ASR	For uncompensated Baro-VNAV systems, LNAV/VNAV NA below -21°C or above 54°C. # RVR 1800 authorized with use of FD or AP or HUD to DA.			

ATIS 124.1 270.1	DULUTH APP CON 125.45 233.7	DULUTH TOWER 118.3 257.8	GND CON 121.9 348.6
----------------------------	---------------------------------------	------------------------------------	-------------------------------



ELEV 1428	D	TDZE 1421
-----------	----------	-----------



CATEGORY	DA#	1621/24	200 (200- $\frac{1}{2}$)	1871/45	450 (500- $\frac{3}{4}$)	1860/24	439 (500- $\frac{1}{2}$)	1860/40	439 (500- $\frac{3}{4}$)	1880-1	452 (500-1)	1900-1	472 (500-1)	1940-1 $\frac{1}{2}$	512 (600-1 $\frac{1}{2}$)	2400-3	972 (1000-3)
LPV	DA#																
RNAV/VNAV	DA																
RNAV MDA																	
CIRCLING																	

TDZ/CL Rwy 9
REIL Rwy 3 and 21
HIRL Rwy 9-27
MIRL Rwy 3-21

DULUTH, MINNESOTA

Amdt 1 10OCT19

DULUTH INTL (DLH)

RNAV (GPS) RWY 27

46°51'N-92°12'W

NC-1, 10 JUL 2025 to 07 AUG 2025

NC-1, 10 JUL 2025 to 07 AUG 2025