

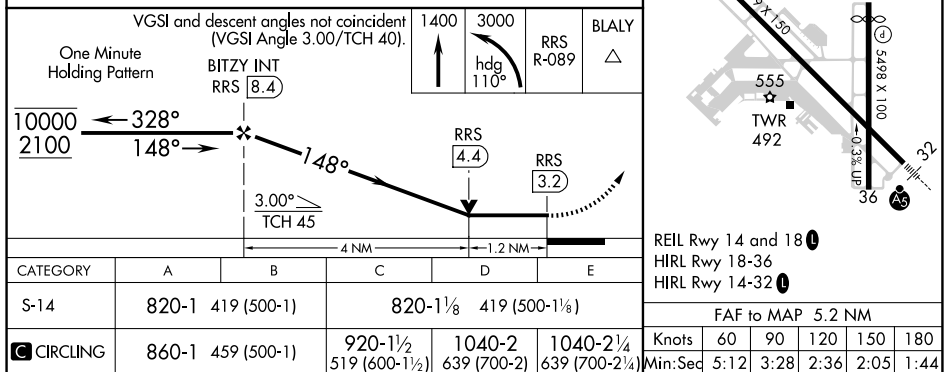
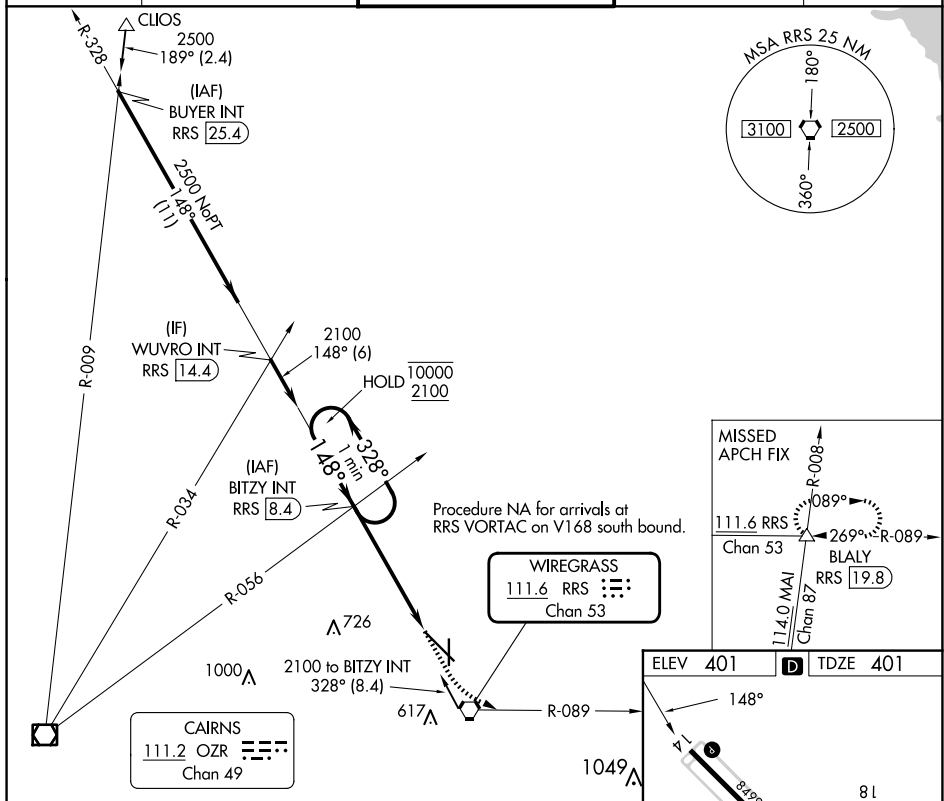
25163

VOR or TACAN RWY 14
DOTHAN RGNL (DHN)



MISSED APPROACH: Climb to 1400 then climbing left turn to 3000 on heading 110° and on RRS VORTAC R-089 to BLALY INT/RRS 19.8 DME and hold.

ATIS 135.725	CAIRNS APP CON ★ 125.4 327.125	DOTHAN TOWER★ 118.4 (CTAF) 0 257.6	GND CON 121.7 348.6	UNICOM 122.95
------------------------	--	--	-------------------------------	-------------------------



DOOTHAN RGNL (DHN)
31°19'N-85°27'W **VOR or TACAN RWY 14**