


DOOTHAN, ALABAMA

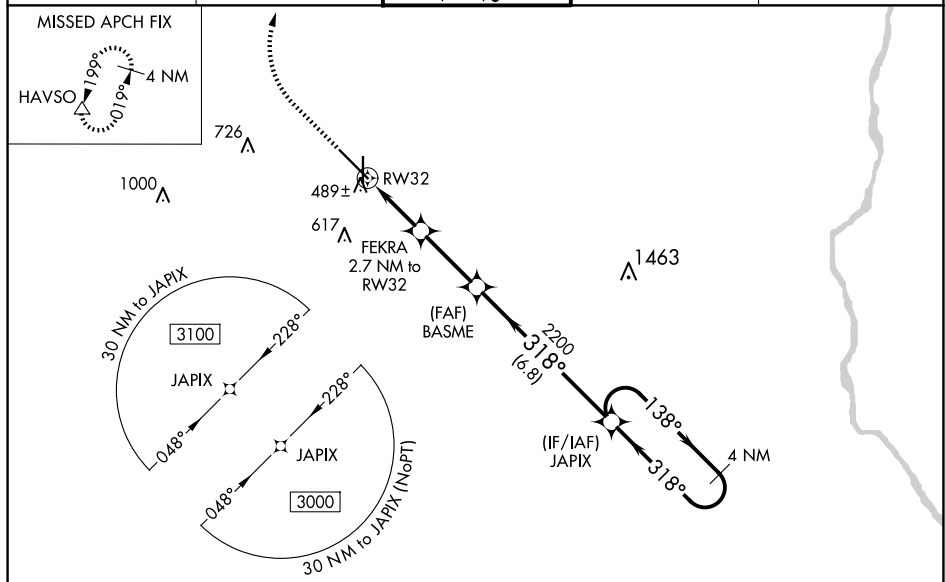
AL-123 (FAA)

25163

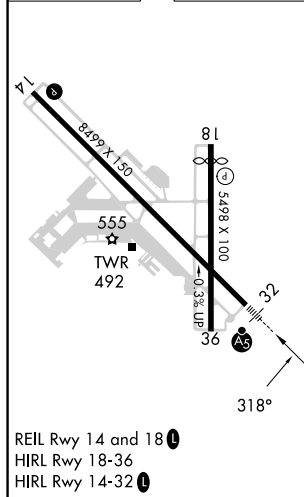
WAAS CH 93704 W32A	APP CRS 318°	Rwy Idg 8496 TDZE 382 Apt Elev 401
--	------------------------	---

RNAV (GPS) RWY 32
DOTHAN RGNL (DHN)

<p>T</p> <p>For uncompensated Baro-VNAV systems, LNAV/VNAV NA below -15°C (5°F) or above 41°C (105°F). DME/DME RNP-0.3 NA. **RVR 1800 authorized with use of FD or AP or HUD to DA.</p>		<p>MALSR</p> 	<p>MISSED APPROACH: Climb to 900 then climbing right turn to 3000 direct HAVSO and hold.</p>	
<p>ATIS 135.725</p>	<p>CAIRNS APP CON ★ 125.4 327.125</p>	<p>DOTHAN TOWER★ 118.4 (CTAF) 0 257.6</p>	<p>GND CON 121.7 348.6</p>	<p>UNICOM 122.95</p>



ELEV 401	D	TDZE 382
----------	----------	----------



900 ↑	3000 ↗	HAVSO △				
<p>*LNAV only.</p>			<p>FEKRA 2.7 NM to RW32</p> <p>BASME 2200</p> <p>JAPIX</p> <p>4 NM Holding Pattern</p> <p>1280*</p> <p>2200</p> <p>138°</p> <p>318°</p> <p>318°</p> <p>3000</p> <p>GP 3.00° TCH 57</p> <p>1 NM 1.8 NM 2.8 NM 6.8 NM</p>			
CATEGORY		A	B	C	D	
LPV	DA**	582/24 200 (200-½)				
LNAV/VNAV	DA	670/24 288 (300-½)				
LNAV	MDA	740/24 358 (400-½)		740/30 358 (400-¾)		
C CIRCLING		860-1 459 (500-1)		920-1½ 519 (600-1½)		1040-2 639 (700-2)

DOTHAN, ALABAMA
Amdt 1C 18JUN20

31°19'N-85°27'W

DOTHAN RGNL (DHN)
RNAV (GPS) RWY 32

SE-4, 10 JUL 2025 to 07 AUG 2025

SE-4, 10 JUL 2025 to 07 AUG 2025