

LOC I-DHN	APP CRS	Rwy Idg	8496
108.3	318°	TDZE	382
		Apt Elev	401

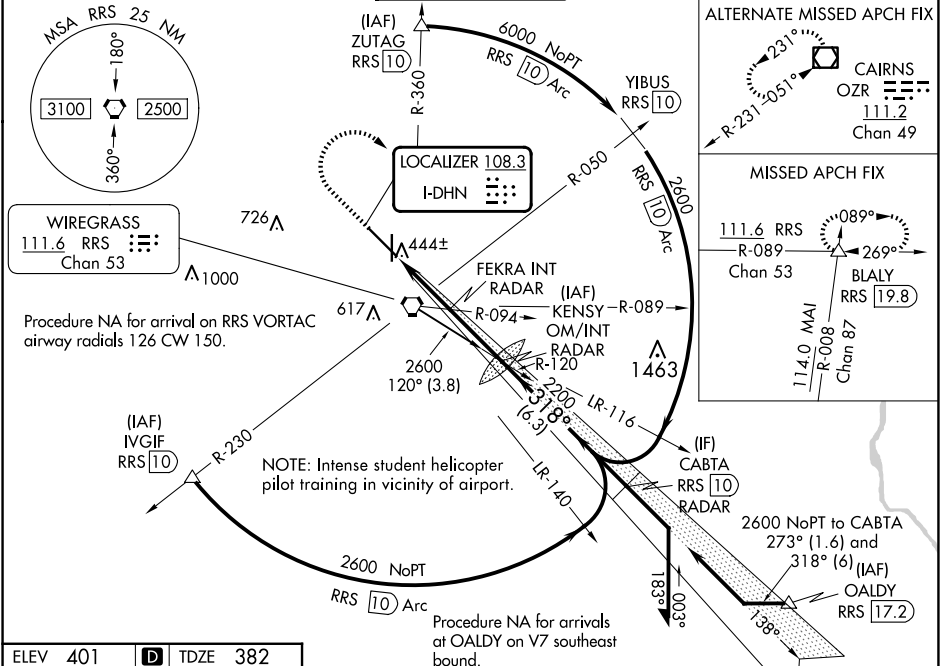
ILS or LOC RWY 32
DOTHAN RGNL (DHN)

▼ For inop ALS, increase S-ILS 32 Cat E visibility to RVR 4000, S-LOC 32 Cat C/D/E visibility to 2½ SM, and S-LOC 32 FEKRA fix minimums Cat C/D/E visibility to RVR 5000.
****** RVR 1800 authorized with use of FD or AP or HUD to DA.

MALSR

MISSED APPROACH: Climb to 1000 then climbing right turn to 3000 on hdg 130° and on RRS VORTAC R-089 to BLALY INT/RRS VORTAC 19.8 DME and hold.

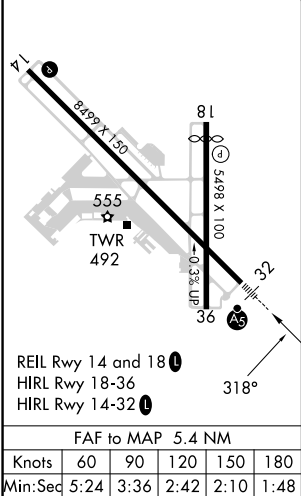
ATIS 135.725	CAIRNS APP CON* 125.4 327.125	DOTHAN TOWER ★ 118.4 (CTAF) 0 257.6	GND CON 121.7 348.6	UNICOM 122.95
-----------------	----------------------------------	--	------------------------	------------------



ALTERNATE MISSED APCH FIX

MISSED APCH FIX

ELEV 401	D TDZE 382
----------	-------------------



1000 ↑	3000 hdg 130°	RRS R-089	BLALY △	KENSY OM/INT RADAR		Remain within 15 NM
<p>FEKRA INT RADAR</p> <p>1220</p> <p>2200</p> <p>2167</p> <p>138°</p> <p>318°</p> <p>6000</p> <p>2300</p> <p>GS 3.00% TCH 57</p>						
CATEGORY	A	B	C	D	E	
S-ILS 32 **	582/24 200 (200-½)					
S-LOC 32	1220/24 838 (900-½)	1220/40 838 (900-¾)	1220-1⅞ 838 (900-1⅞)			
C CIRCLING	1220-1¼ 819 (900-1¼)	1220-2½ 819 (900-2½)	1220-2¾ 819 (900-2¾)	1220-3 819 (900-3)		
FEKRA FIX MINIMUMS (DUAL VOR RECEIVERS OR RADAR REQUIRED)						
S-LOC 32	720/24 338 (400-½)	720/26 338 (400-½)				
C CIRCLING	860-1 459 (500-1)	920-1½ 519 (600-1½)	1040-2 639 (700-2)	1040-2¼ 639 (700-2¼)		

SE-4, 10 JUL 2025 to 07 AUG 2025

SE-4, 10 JUL 2025 to 07 AUG 2025