

WAAS CH <b>50544</b> <b>W32A</b>	APP CRS <b>320°</b>	Rwy Idg TDZE <b>2587</b> Apt Elev <b>2592</b>	<b>7301</b>
--	------------------------	---	-------------

RNAV (GPS) RWY 32

DICKINSON/THEODORE ROOSEVELT RGNL (DIK)

RNP APCH - GPS.

▼

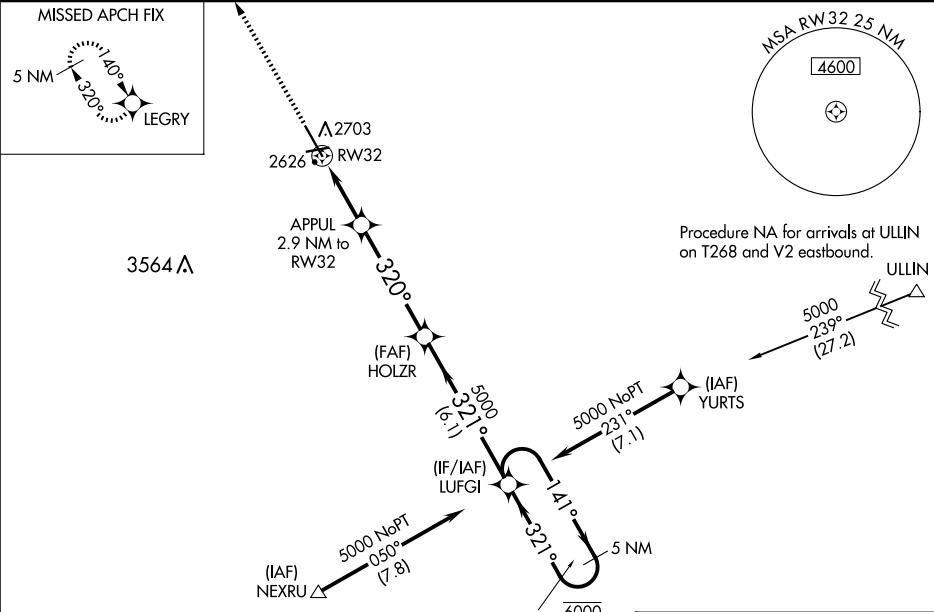
▲

For uncompensated Baro-VNAV systems, LNAV/VNAV NA below -24°C or above 54°C. For inop ALS, increase LNAV/VNAV all Cats visibility to ¾ SM and LNAV Cat C/D visibility to ⅔ SM.

MALSR

MISSED APPROACH: Climb to 4400 direct LEGRY and hold.

ASOS <b>118.375</b>	MINNEAPOLIS CENTER <b>124.25 236.825</b>	UNICOM <b>123.0 (CTAF) 0</b>
------------------------	---	---------------------------------



4400 LEGRY

HOLZR LUFGI

5 NM Holding Pattern

APPUL 2.9 NM to RW32

0.8 NM to RW32

320° 321° 141°

6000 5000

GP 3.00° TCH 50

CATEGORY	A	B	C	D
LPV DA	2787-½ 200 (200-½)			
LNAV/VNAV DA	2837-½ 250 (300-½)			
LNAV MDA	2880-½ 293 (300-½)			
CIRCLING	3060-1 468 (500-1)	3120-1½ 528 (600-1½)	3200-2 608 (700-2)	

ELEV 2592 D TDZE 2587

HIRL Rwy 14-32 0

MIRL Rwy 7-25 0

REIL Rws 7, 14 and 25 0