

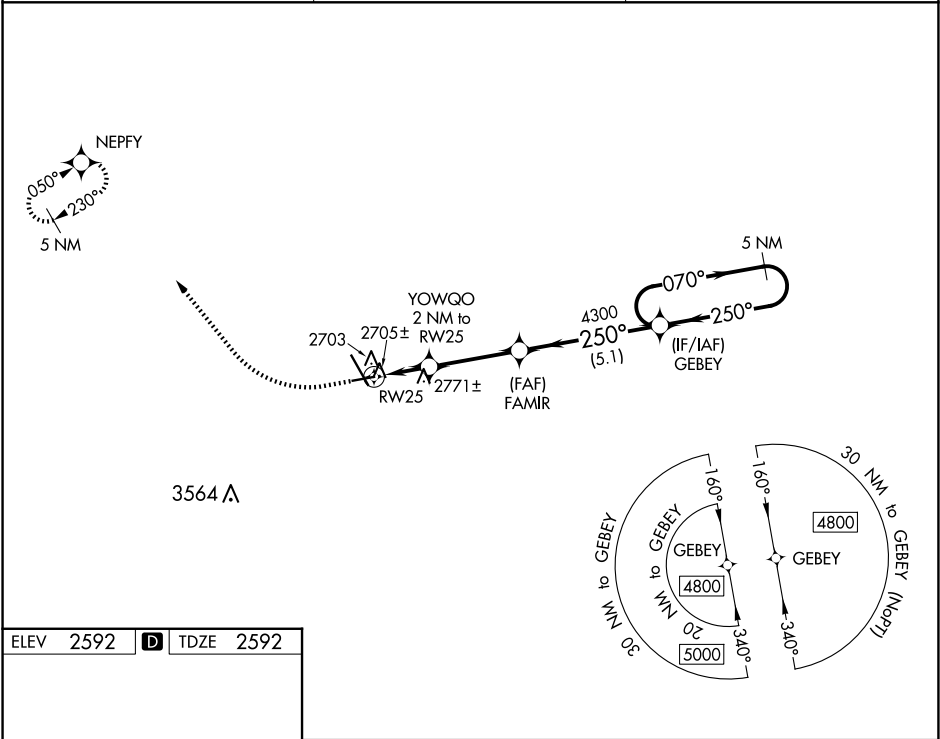
WAAS CH <b>82534</b> <b>W25A</b>	APP CRS <b>250°</b>	Rwy Idg TDZE Apt Elev	<b>4700</b> <b>2592</b> <b>2592</b>
--	------------------------	-----------------------------	---

RNAV (GPS) RWY 25

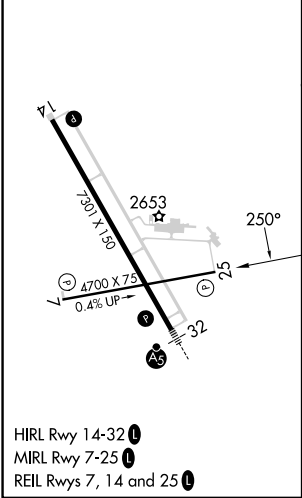
DICKINSON/THEODORE ROOSEVELT RGNL (DIK)

RNP APCH. ▼ Rwy 25 helicopter visibility reduction below ¾ SM NA. When local altimeter setting not received, use Bowman altimeter setting and increase all MDA 160 feet and visibility Cats C and D ½ SM. ⚠	MISSED APPROACH: Climb to 3200 then climbing right turn to 4800 direct NEPFY and hold.
---	--

ASOS <b>118.375</b>	MINNEAPOLIS CENTER <b>124.25 236.825</b>	UNICOM <b>123.0 (CTAF) 0</b>
------------------------	---	---------------------------------



ELEV	2592	<b>D</b>	TDZE	2592
------	------	----------	------	------



HIRL Rwy 14-32  
MIRL Rwy 7-25  
REIL Rwy 7, 14 and 25

3200	4800	NEPFY				
		FAMIR				
		YOWQO 2 NM to RW25	≤ 3.00° TCH 28			
		RW25	3240	4300		
		2 NM	3.3 NM	5.1 NM		
CATEGORY	A	B	C	D		
LP MDA	2980-1	388 (400-1)	2980-1½	388 (400-1½)		
LNAV MDA	3060-1	468 (500-1)	3060-1¾	468 (500-1¾)		
<b>C</b> CIRCLING	3080-1 488 (500-1)	3100-1 508 (600-1)	3120-1½ 528 (600-1½)	3220-2 628 (700-2)		