

LOC/DME I-DIK 108.3 Chan 20	APP CRS 320°	Rwy Idg 7301 TDZE 2587 Apt Elev 2592
---	------------------------	---

ILS or LOC RWY 32

DICKINSON/THEODORE ROOSEVELT RGNL (DIK)

DME required.

RNP APCH - GPS. From NEXRU or YURTS.

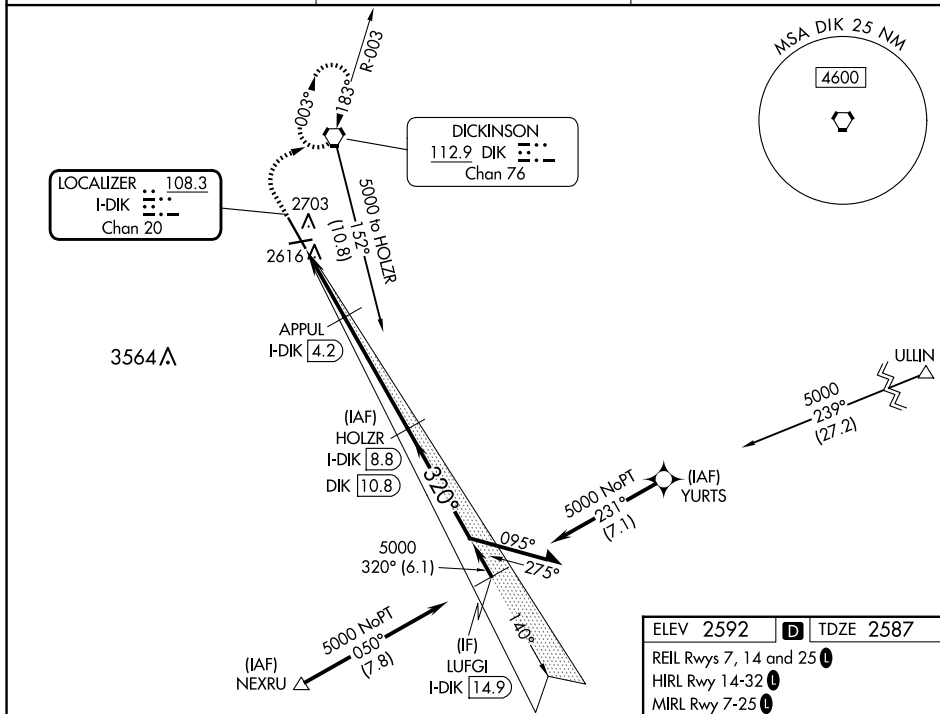
T Use I-DIK DME when on the localizer course. For inop ALS, **A** increase S-LOC 32 Cat C/D visibility to 1½ SM.

MALSR



MISSED APPROACH: Climb to 3000, then climbing right turn to 5000 direct DIK VORTAC and hold, continue climb-in-hold to 5000.

ASOS 118.375	MINNEAPOLIS CENTER 124.25 236.825	UNICOM 123.0 (CTAF) 0
------------------------	---	---------------------------------

[illegible]