

(ZETTR4.ZETTR) 24137

ZETTR FOUR DEPARTURE (RNAV) Transition Routes

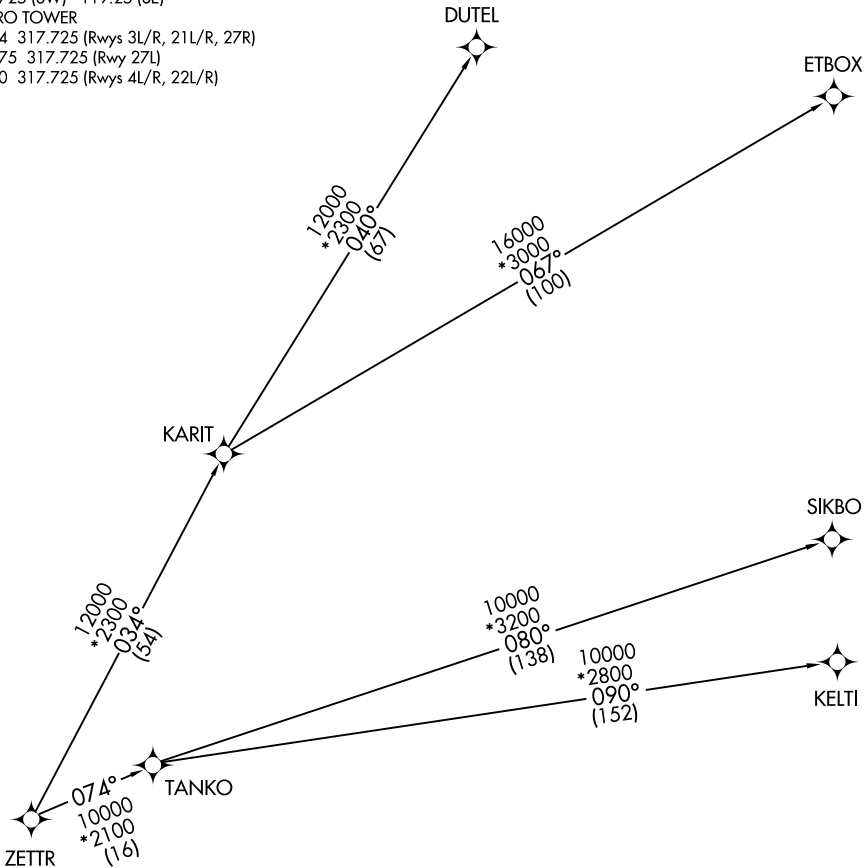
DETROIT METRO WAYNE COUNTY (DTW)

DETROIT, MICHIGAN

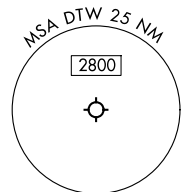
DETROIT DEP CON  
125.525 284.0 (Rwys 22L/R, 27L/R)  
132.025 284.0 (Rwys 3L/R, 4L/R, 21L/R)  
D-ATIS 118.125  
CLNC DEL 120.65  
CPDLC  
GND CON  
121.8 (NW) 119.45 (NE)  
132.725 (SW) 119.25 (SE)  
METRO TOWER  
118.4 317.725 (Rwys 3L/R, 21L/R, 27R)  
128.75 317.725 (Rwy 27L)  
135.0 317.725 (Rwys 4L/R, 22L/R)

RNAV 1 - DME/DME/IRU or GPS.  
RADAR required.

TOP ALTITUDE:  
17000



NOTE: Turbojet departures at/at above 10000, maintain 280K until advised by ATC.  
NOTE: TANKO Transition: For use by CYYZ area arrivals only, or as assigned by ATC.



NOTE: Chart not to scale.

(CONTINUED ON FOLLOWING PAGE)

ZETTR FOUR DEPARTURE (RNAV) Transition Routes

(ZETTR4.ZETTR) 16MAY24

DETROIT, MICHIGAN

DETROIT METRO WAYNE COUNTY (DTW)

EC-1, 10 JUL 2025 to 07 AUG 2025

EC-1, 10 JUL 2025 to 07 AUG 2025