

DETROIT DEP CON  
125.525 284.0 (Rwys 22L/R, 27L/R)  
132.025 284.0 (Rwys 3L/R, 4L/R, 21L/R)  
D-ATIS 118.125  
CLNC DEL 120.65  
CPDLC  
GND CON  
121.8 (NW) 119.45 (NE)  
132.725 (SW) 119.25 (SE)  
METRO TOWER  
118.4 317.725 (Rwys 3L/R, 21L/R, 27R)  
128.75 317.725 (Rwy 27L)  
135.0 317.725 (Rwys 4L/R, 22L/R)

RNAV 1 - DME/DME/IRU or GPS.  
RADAR required.

TOP ALTITUDE:  
17000

See following  
page for  
Transition  
Routes

ZETTR

FLOKA

049°  
(111)

043°  
(117)

019°  
(311)

036°  
(111)

084°  
(4)

094°  
(4)

036°  
(111)

036°  
(111)

036°  
(111)

036°  
(111)

036°  
(111)

036°  
(111)

036°  
(111)

036°  
(111)

036°  
(111)

036°  
(111)

036°  
(111)

036°  
(111)

036°  
(111)

036°  
(111)

036°  
(111)

036°  
(111)

036°  
(111)

036°  
(111)

036°  
(111)

036°  
(111)

036°  
(111)

036°  
(111)

036°  
(111)

036°  
(111)

036°  
(111)

036°  
(111)

036°  
(111)

036°  
(111)

036°  
(111)

036°  
(111)

036°  
(111)

036°  
(111)

036°  
(111)

036°  
(111)

036°  
(111)

036°  
(111)

036°  
(111)

036°  
(111)

036°  
(111)

036°  
(111)

036°  
(111)

036°  
(111)

036°  
(111)

036°  
(111)

036°  
(111)

036°  
(111)

036°  
(111)

036°  
(111)

036°  
(111)

036°  
(111)

036°  
(111)

036°  
(111)

036°  
(111)

036°  
(111)

036°  
(111)

036°  
(111)

036°  
(111)

036°  
(111)

036°  
(111)

036°  
(111)

036°  
(111)

036°  
(111)

036°  
(111)

036°  
(111)

036°  
(111)

036°  
(111)

036°  
(111)

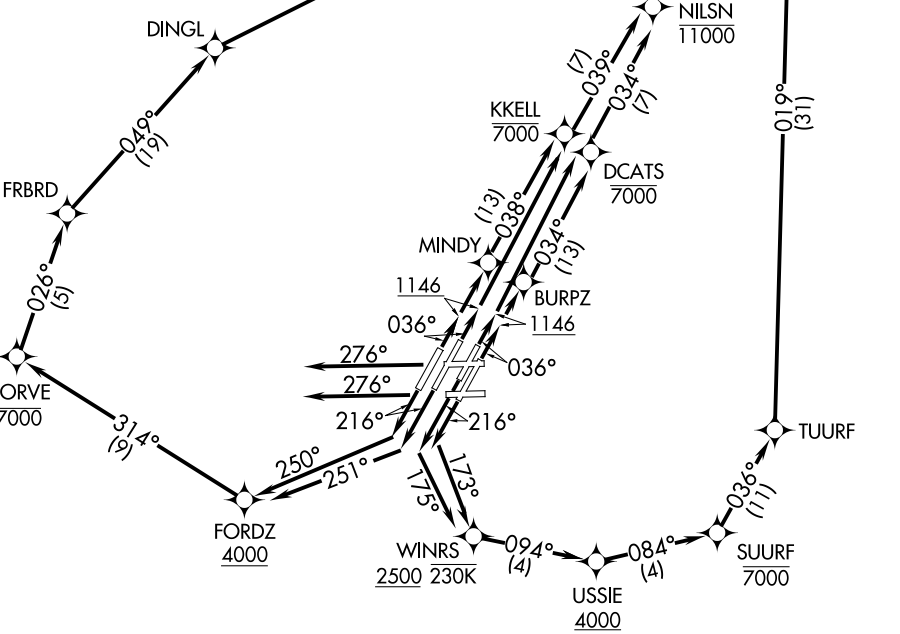
036°  
(111)

036°  
(111)

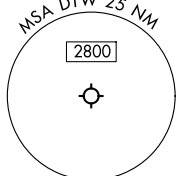
036°  
(111)

TAKEOFF MINIMUMS:

Rwys 27L/R: Standard.  
Rwys 3L/R, 4L/R, 21/R, 22L/R: Standard  
with minimum climb of 500' per NM to 1146.



NOTE: Turbojet departures at/above 10000,  
maintain 280K until advised by ATC.  
NOTE: TANKO TRANSITION: For use by CYYZ  
area arrivals only, or as assigned by ATC.



NOTE: Chart not to scale. (CONTINUED ON FOLLOWING PAGE)