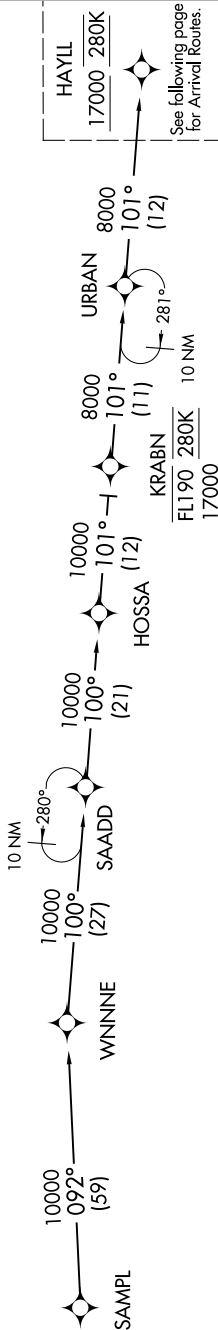


D-ATIS  
133.675  
DETROIT APP CON  
124.975 284.0



- NOTE: RADAR required.
- NOTE: RNAV 1.
- NOTE: DME/DME/IRU or GPS required.
- NOTE: Use Runway 22R transition or as assigned by ATC.  
Expect runway assignment from Detroit APP CON no later than 10 NM from UUOFM.
- NOTE: For use when DTW landing south or west. When DTW landing north, file and expect the HAYLL RNAV STAR.
- NOTE: For use by flights departing KMDW, KSBN, KAZO, KMCI, KLAS, KLAX, KPHX, KSAN, AND KSNA area airports only, or as assigned by ATC.



HOSSA TRANSITION (HOSSA.VCTRZ2)  
SAMPL TRANSITION (SAMPL.VCTRZ2)

NOTE: Chart not to scale.

(HAYLL.VCTRZ2) 21112

AL-119 (FAA)

DETROIT METRO WAYNE COUNTY (DTW)

VCTRZ TWO ARRIVAL(RNAV) Transition Routes

DETROIT, MICHIGAN

VCTRZ TWO ARRIVAL (RNAV) Transition Routes

(HAYLL.VCTRZ2) 10OCT19

DETROIT, MICHIGAN

DETROIT METRO WAYNE COUNTY (DTW)

(CONTINUED ON FOLLOWING PAGE)