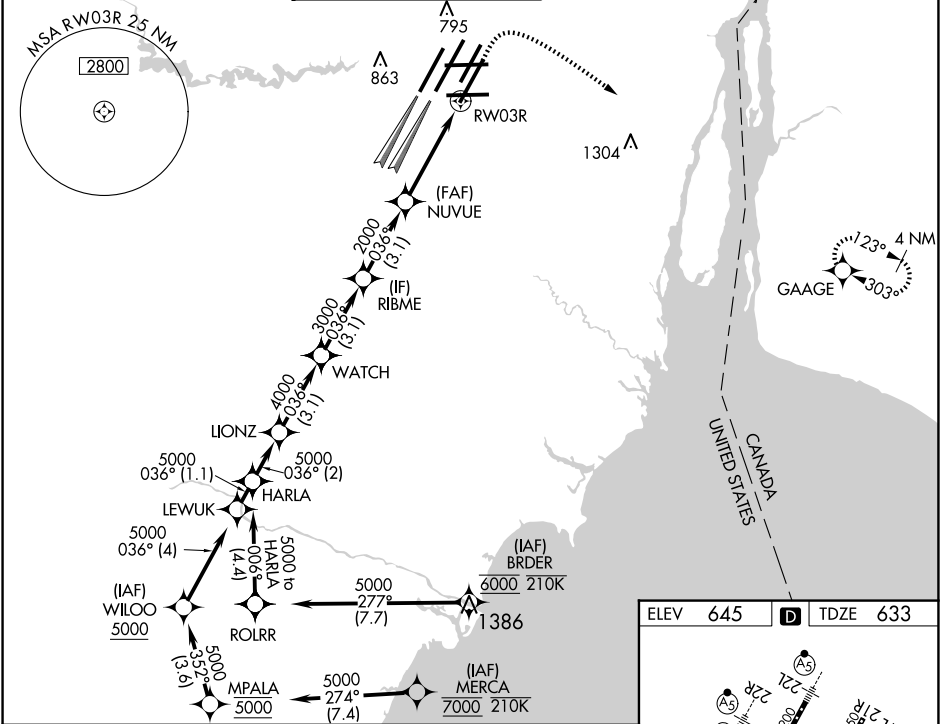


WAAS CH 61304 W03A	APP CRS 036°	Rwy Ldg 10001 TDZE 633 Apt Elev 645
--	------------------------	--

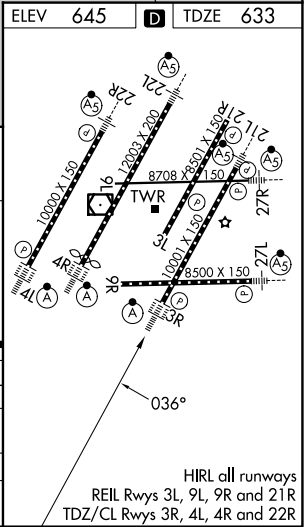
RNAV (GPS) Z RWY 3R
DETROIT METRO WAYNE COUNTY (DTW)

RNP APCH. ▼ For uncompensated Baro-VNAV systems, LNAV/VNAV NA below -19°C (-2°F) or above 54°C (130°F). Simultaneous approach authorized. LNAV procedure NA during simultaneous operations. Use of FD or AP required during simultaneous operations.	ALSF-2 ⓘ	MISSED APPROACH: Climb to 1100 then climbing right turn to 4000 direct GAAGE and hold, continue climb-in-hold to 4000.
---	-------------	--

D-ATIS 133.675	DETROIT APP CON 125.15 284.0	METRO TOWER 118.4 317.725	GND CON 121.8 (NW) 119.45 (NE) 132.725 (SW) 119.25 (SE)	CLNC DEL 120.65	CPDLC
--------------------------	--	-------------------------------------	---	---------------------------	-------



VGSi and RNAV glidepath not coincident (VGSi Angle 3.00/TCH 70).			
HARLA LIONZ WATCH RIBME NUVUE			
5000-036° 5000 4000 3000 2000			
GP 3.00° TCH 54			
2 NM 3.1 NM 3.1 NM 3.1 NM 2.9 NM 1.2			
CATEGORY	A	B	C
LPV DA	833/18		200 (200-½)
LNAV/VNAV DA	1013/35		380 (400-¾)
LNAV MDA	1080/24	447 (500-½)	1080/45 447 (500-¾)
CIRCLING	1180-1	535 (600-1)	1180-1½ 535 (600-½) 1240-2 595 (600-2)



EC-1, 10 JUL 2025 to 07 AUG 2025

EC-1, 10 JUL 2025 to 07 AUG 2025