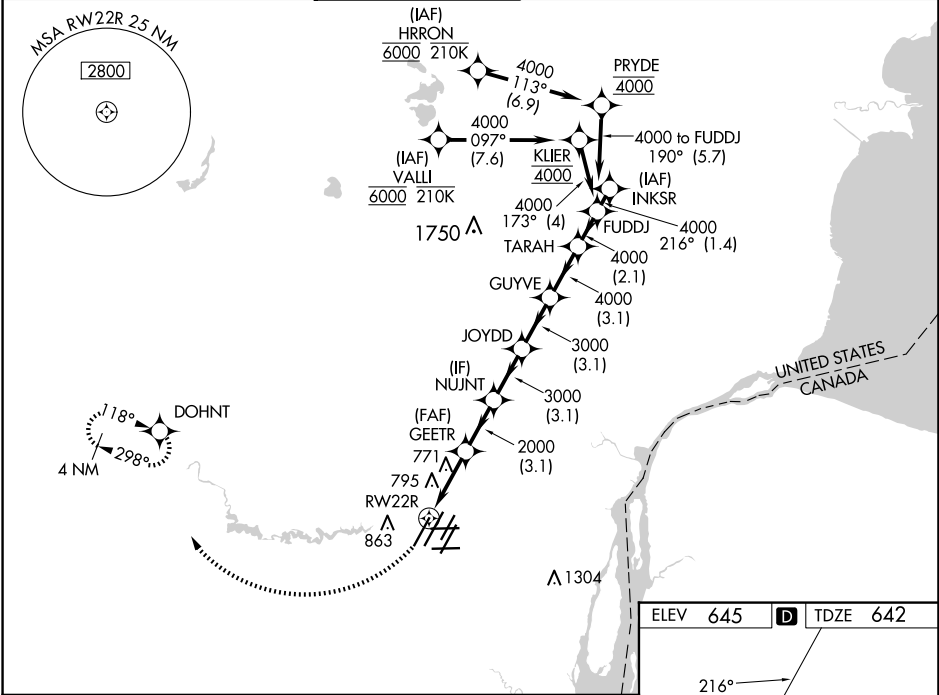


WAAS CH 70642 W22D	APP CRS 216°	Rwy Ldg 10000 TDZE 642 Apt Elev 645
--	------------------------	--

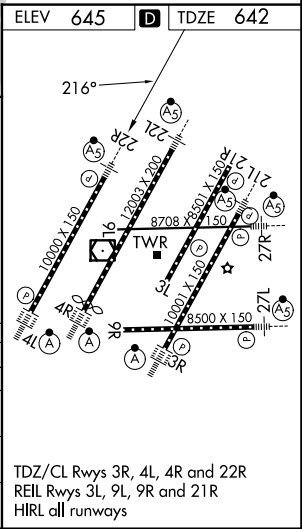
RNAV (GPS) Z RWY 22R
DETROIT METRO WAYNE COUNTY (DTW)

RNP APCH.	Simultaneous approach authorized. Use of FD or AP required during simultaneous operations. LNAV procedure NA during simultaneous operations. For uncompensated Baro-VNAV systems, LNAV/VNAV NA below -19°C or above 54°C. For inop ALS, increase LNAV/VNAV all Cnts visibility to RVR 4500.	MALSR 	MISSED APPROACH: Climb to 1100 then dimbing right turn 4000 direct DOHNT and hold, continue climb in hold to 4000.
-----------	---	-----------	--

D-ATIS 133.675	DETROIT APP CON 124.05 284.0	METRO TOWER 128.125 317.725	GND CON 121.8 (NW) 119.45 (NE) 132.725 (SW) 119.25 (SE)	CLNC DEL 120.65	CPDLC
--------------------------	--	---------------------------------------	---	---------------------------	-------



1100	4000	DOHNT	VGSI and RNAV glidepath not coincident (VGSI Angle 3.00/ TCH 71)
*LNAV only.			
RW22R 1 NM 3.1 NM 3.1 NM 3.1 NM 3.1 NM 3.1 NM 2.1 NM			
GEETR 2000	NUJNT 3000	JOYDD 3000	FUDDJ 4000
216° 4000			
GP 3.00° TCH 55'			
CATEGORY	A	B	C
LPV DA	842/18 200 (200-½)		
LNAV/VNAV DA	948/24 306 (400-½)		
LNAV MDA	1040/24 398 (400-½)	1040/35 398 (400-¾)	
CIRCLING	1180-1 535 (600-1)	1180-1½ 535 (600-½)	1240-2 595 (600-2)



EC-1, 10 JUL 2025 to 07 AUG 2025

EC-1, 10 JUL 2025 to 07 AUG 2025