

WAAS CH <b>99601</b> <b>W22A</b>	APP CRS <b>216°</b>	Rwy Ldg <b>12003</b> TDZE <b>637</b> Apt Elev <b>645</b>
--	------------------------	--

RNAV (GPS) Z RWY 22L  
DETROIT METRO WAYNE COUNTY (DTW)

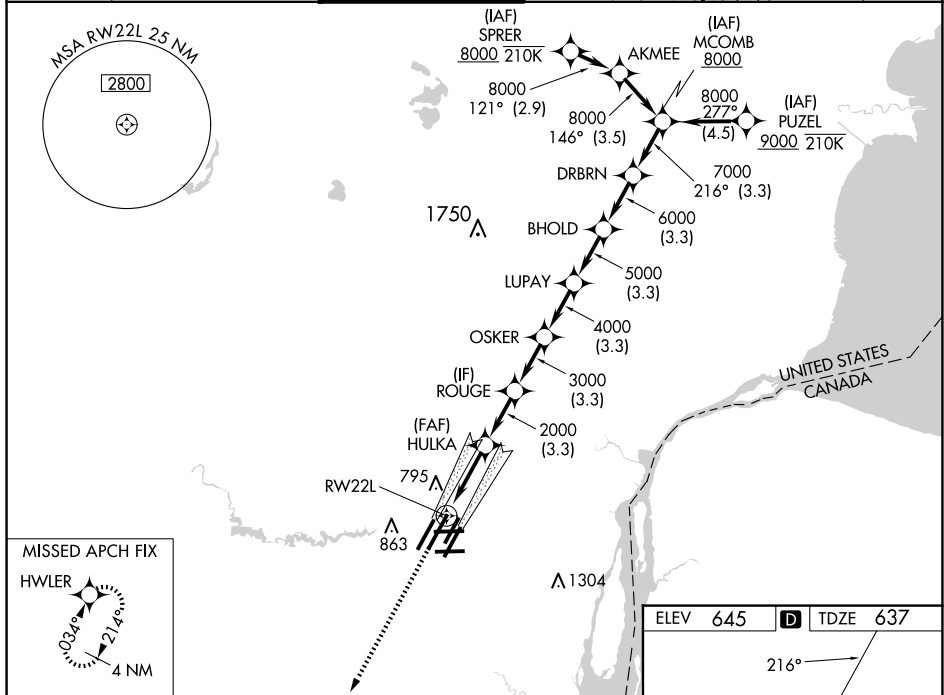
RNP APCH.

▼ For uncompensated Baro-VNAV systems, LNAV/VNAV NA below -10°C (14°F) or above 54°C (130°F). Simultaneous approach authorized. LNAV procedure NA during simultaneous operations. Use of FD or AP required during simultaneous operations. For inop ALS, increase LNAV/VNAV all Cats visibility to RVR 4500 and LNAV Cat C/D visibility to 1½ SM. #RVR 1800 authorized with use of FD or AP or HUD to DA.

MALSI

**MISSED APPROACH:**  
Climb to 4000 direct  
HWLER and hold.

D-ATIS <b>133.675</b>	DETROIT APP CON <b>124.05 284.0</b>	METRO TOWER <b>128.125 317.725</b>	GND CON <b>121.8 (NW) 119.45 (NE)</b> <b>132.725 (SW) 119.25 (SE)</b>	CLNC DEL <b>120.65</b>	CPDLC
--------------------------	--	---------------------------------------	---	---------------------------	-------



4000  
↑  
HWLER

\* LNAV only.

1.3 NM to RW22L

RW22L

HULKA 2000

ROUGE 3000

OSKER 4000

LUPAY 5000

BHOLD 6000

DRBRN 7000

MCOMB 8000

GP 2.85°  
TCH 60

1.3 NM 3 NM 3 NM 3 NM 3 NM 3 NM 3 NM 3 NM

CATEGORY	A	B	C	D
LPV DA#		837/24	200 (200-½)	
LNAV/VNAV DA		938/24	301 (300-½)	
LNAV MDA	1100/24	463 (500-½)	1100/50	463 (500-¾)
CIRCLING	1180-1	535 (600-1)	1180-1½ 535 (600-1½)	1240-2 595 (600-2)

