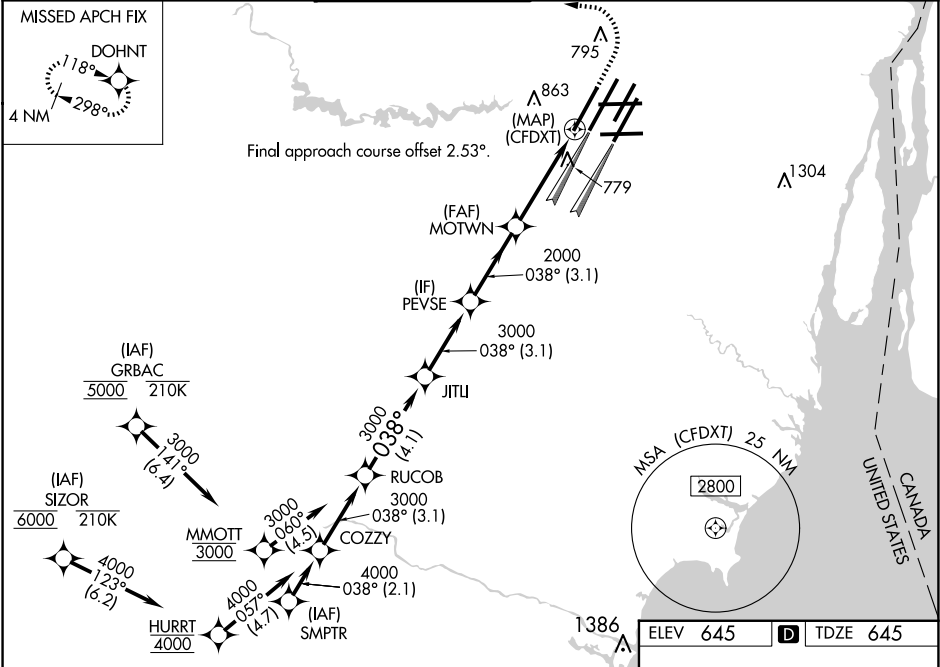


WAAS CH 82439 W04A	APP CRS 038°	Rwy Ldg 10000 TDZE 645 Apt Elev 645
--	------------------------	--

RNAV (GPS) Y RWY 4L

DETROIT METRO WAYNE COUNTY (DTW)

RNP APCH. Simultaneous approach authorized. LNAV procedure NA during simultaneous operations. Use of FD or AP required during simultaneous operations. For uncompensated Baro-VNAV systems, LNAV/VNAV NA below -19°C or above 54°C.		ALSF-2 	MISSED APPROACH: Climb to 1100 then climbing left turn to 4000 direct DOHNT and hold.	
D-ATIS 133.675	DETROIT APP CON 124.05 284.0	METRO TOWER 135.0 317.725	GND CON 121.8 (NW) 119.45 (NE) 132.725 (SW) 119.25 (SE)	CLNC DEL 120.65
				CPDLC



VGSI and RNAV glidepath not coincident (VGSI Angle 3.00/TCH 71).				
<div></div>				
* LNAV only.				
CATEGORY	A	B	C	D
LPV DA	895/24		250 (300-½)	
LNAV/VNAV DA	1068/45		423 (500-¾)	
LNAV MDA	1040/24		1040/35	395 (400-¾)
CIRCLING	1180-1 535 (600-1)		1180-1½ 535 (600-1½)	1240-2 595 (600-2)

TDZ/CL Rwys 3R, 4L, 4R and 22R
REIL Rwys 3L, 9L, 9R and 21R
HIRL all runways

EC-1, 10 JUL 2025 to 07 AUG 2025

EC-1, 10 JUL 2025 to 07 AUG 2025