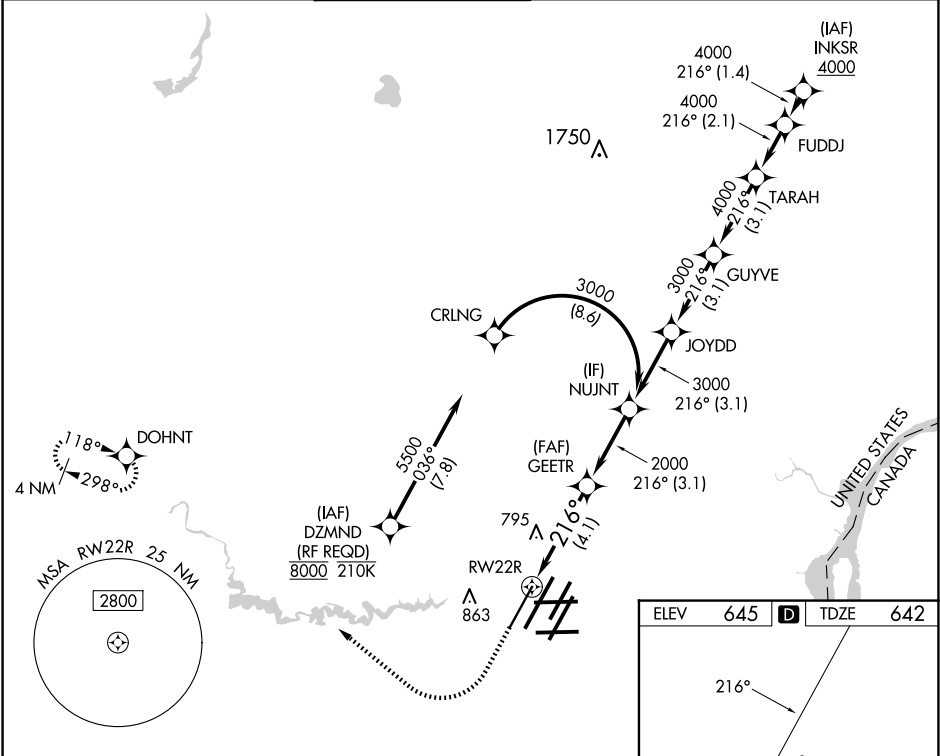


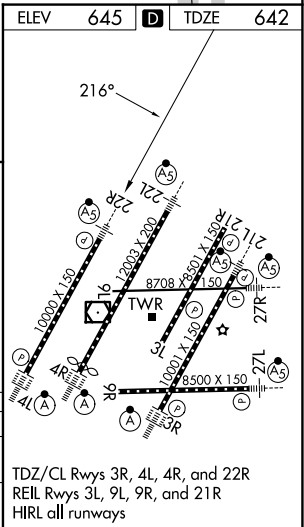
APP CRS	Rwy Ldg	10000
216°	TDZE	642
	Apt Elev	645

RNAV (RNP) W RWY 22R  
DETROIT METRO WAYNE COUNTY (DTW)

RNP AR APCH. ▼ For uncompensated Baro-VNAV systems, procedure NA below -19°C or above 54°C. Simultaneous approach authorized. For inop ALS, increase RNP 0.30 all Cats visibility to RVR 5500.				MALSR 	MISSED APPROACH: Climb to 1100 then climbing right turn to 4000 direct DOHNT and hold, continue climb-in-hold to 4000.
D-ATIS 133.675	DETROIT APP CON 124.05 284.0	METRO TOWER 135.0 317.725	GND CON 121.8 (NW) 119.45 (NE) 132.725 (SW) 119.25 (SE)	CLNC DEL 120.65	CPDLC



1100	4000	DOHNT	VGSI and RNAV glidepath not coincident (VGSI Angle 3.00/TCH 71).					
CATEGORY	A	B	C	D				
RNP 0.30 DA	987/30 345 (400-5%)							
AUTHORIZATION REQUIRED								



EC-1, 10 JUL 2025 to 07 AUG 2025

EC-1, 10 JUL 2025 to 07 AUG 2025