

25163

RNAV (RNP) U RWY 4L
DETROIT METRO WAYNE COUNTY (DTW)

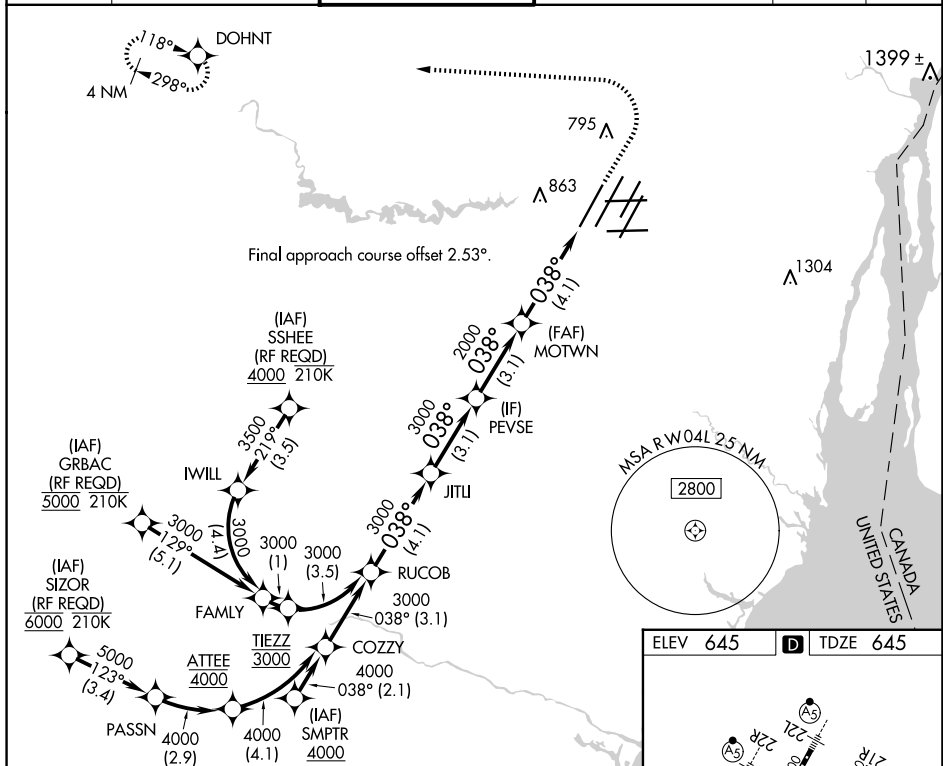
T Simultaneous approach authorized. For uncompensated Baro-VNAV systems, procedure NA below -19°C or above 54°C. For inop ALS, increase RNP 0.30 DA all Cats visibility to RVR 6000.

MISSED APPROACH: Climb to 1100 then climbing left turn to 4000 direct DOHNT and hold.

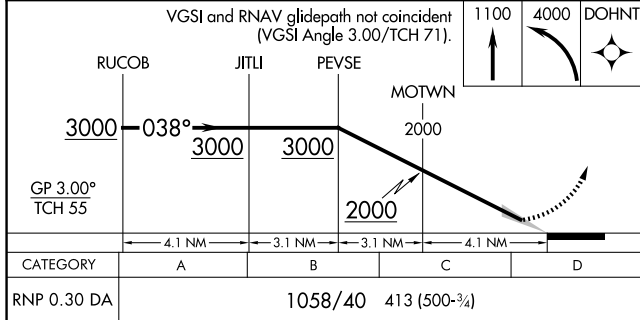
GND CON

121.8 (NW)	119.45 (NE)
132.725 (SW)	119.25 (SE)

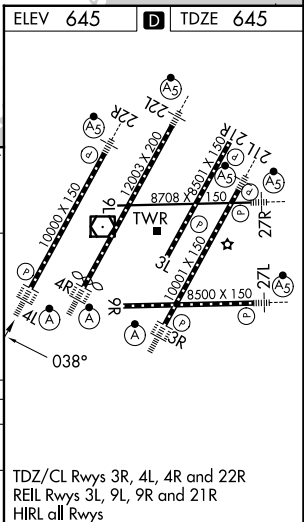
CPDLC



VGSI and RNAV glidepath not coincident
(VGSI Angle 3.00/TCH 71).



AUTHORIZATION REQUIRED



DETROIT METRO WAYNE COUNTY (DTW)
RNAV (RNP) U RWY 4L

42°13'N-83°21'W

EC-1, 10 JUL 2025 to 07 AUG 2025