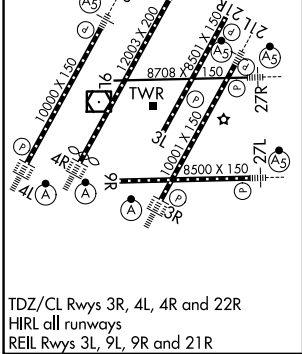
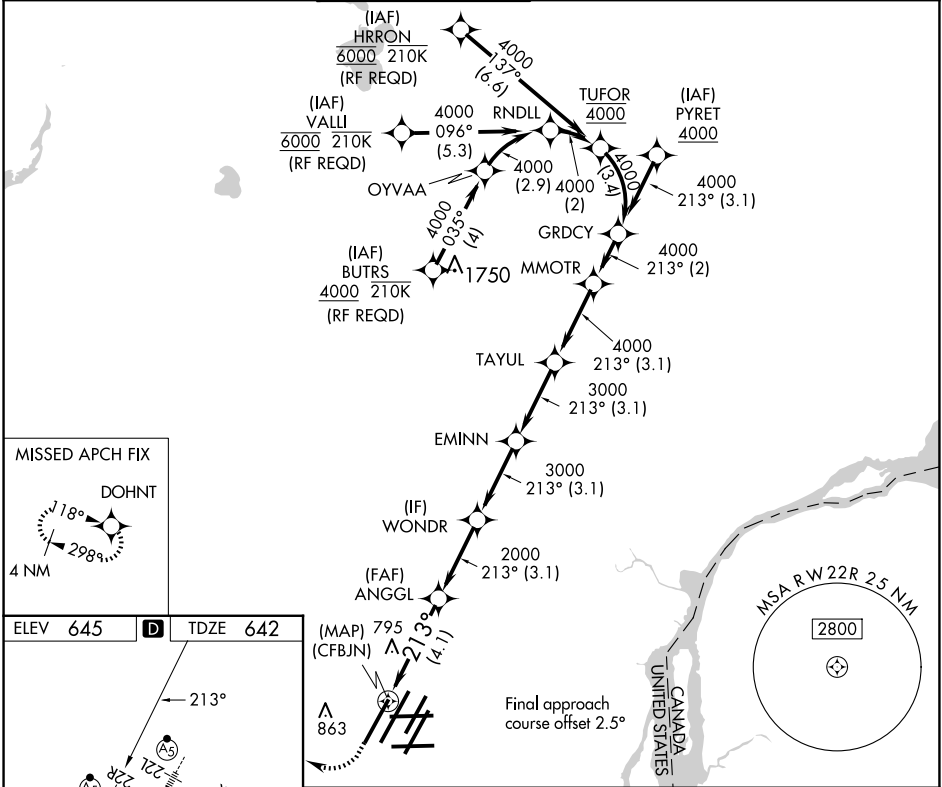




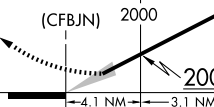
APP CRS	Rwy Ldg	10000
213°	TDZE	642
	Apt Elev	645

RNAV (RNP) U RWY 22R  
DETROIT METRO WAYNE COUNTY (DTW)

RNP AR APCH.	MALSR	MISSED APPROACH: Climb to 1100 then climbing right turn to 4000 direct DOHNT and hold.
▼ For uncompensated Baro-VNAV systems, procedure NA below -19°C (-2°F) or above 54°C (130°F). Simultaneous approach authorized. For inop ALS, increase RNP 0.30 all Cats visibility to RVR 5500.		

D-ATIS	DETROIT APP CON	METRO TOWER	GND CON	CLNC DEL	CPDLC
133.675	124.05 284.0	135.0 317.725	121.8 (NW) 119.45 (NE) 132.725 (SW) 119.25 (SE)	120.65	



<div>1100</div> <div>↑</div>		<div>4000</div> <div></div>	<div>DOHNT</div> <div></div>	VGSI and RNAV glidepath not coincident (VGSI Angle 3.00/TCH 71).			
				EMINN	TAYUL	MMOTR	GRDCY
<div>ANGGL</div> <div>2000</div> <div></div> <div>(CFB)N</div>		<div>WONDR</div> <div>3000</div>	<div>3000</div>	<div>4000</div>	<div>4000</div>	<div>213°</div> <div>4000</div>	<div>GP 3.00°</div> <div>TCH 55</div>
<div>4.1 NM</div>		<div>3.1 NM</div>	<div>3.1 NM</div>	<div>3.1 NM</div>	<div>3.1 NM</div>	<div>2 NM</div>	
CATEGORY	A		B		C		D
RNP 0.30 DA	987/30		345 (400-%)				
AUTHORIZATION REQUIRED							

EC-1, 10 JUL 2025 to 07 AUG 2025

EC-1, 10 JUL 2025 to 07 AUG 2025