

DETROIT, MICHIGAN

AL-119 (FAA)

RNAV (GPS) PRM Z RWY 4R  
(CLOSE PARALLEL)

DETROIT METRO WAYNE COUNTY (DTW)

WAAS CH <b>87139</b> <b>W04B</b>	APP CRS <b>036°</b>	Rwy Ldg <b>11494</b> TDZE <b>640</b> Apt Elev <b>645</b>
--	------------------------	--

RNP APCH.

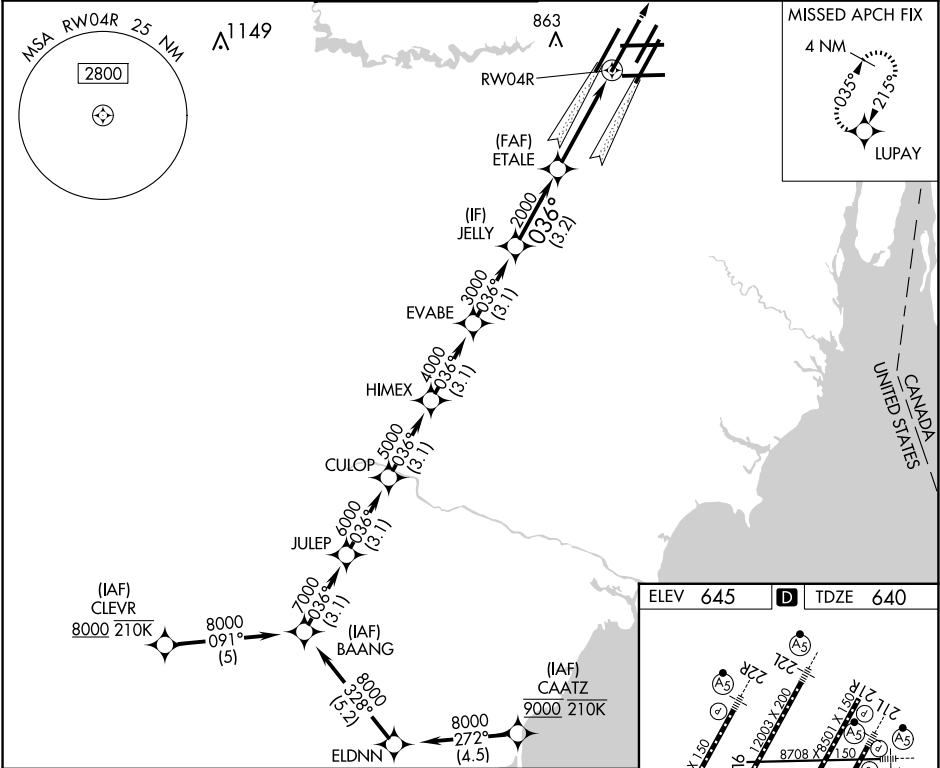
For uncompensated Baro-VNAV systems, LNAV/VNAV NA below -19°C or above 54°C. Simultaneous approach authorized. Use of FD or AP required during simultaneous operations. Dual VHF comm required. See additional requirements on AAUP.

ALSF-2

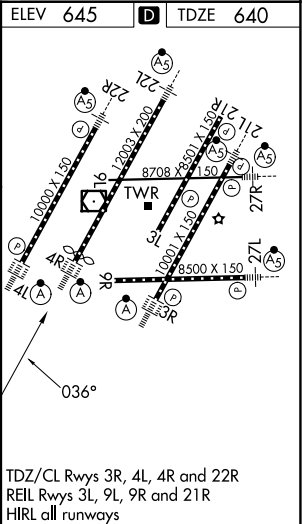


MISSED APPROACH:  
Climb to 4000 direct  
LUPAY and hold.

D-ATIS <b>133.675</b>	DETROIT APP CON <b>124.05 284.0</b>	METRO TOWER <b>128.125 317.725</b> <b>PRM 135.775</b>	GND CON <b>121.8 (NW) 119.45 (NE)</b> <b>132.725 (SW) 119.25 (SE)</b>	CLNC DEL <b>120.65</b>	CPDLC
--------------------------	--	---	---	---------------------------	-------



GP 3.00° TCH 52									
3.1 NM 3.1 NM 3.1 NM 3.1 NM 3.1 NM 3.2 NM 4.1 NM									
CATEGORY		A		B		C		D	
LPV DA		840/18 200 (200-½)							
LNAV/VNAV DA		1021/35 381 (400-¾)							



DETROIT, MICHIGAN  
Amdt 1A 28FEB19

42°13'N-83°21'W  
RNAV (GPS) PRM Z RWY 4R (CLOSE PARALLEL)

DETROIT METRO WAYNE COUNTY (DTW)

EC-1, 10 JUL 2025 to 07 AUG 2025

EC-1, 10 JUL 2025 to 07 AUG 2025