

DETROIT, MICHIGAN

AL-119 (FAA)

RNAV (GPS) PRM Z RWY 22L
(CLOSE PARALLEL)

DETROIT METRO WAYNE COUNTY (DTW)

WAAS CH 99601 W22A	APP CRS 216°	Rwy Ldg 12003 TDZE 637 Apt Elev 645
--	------------------------	--

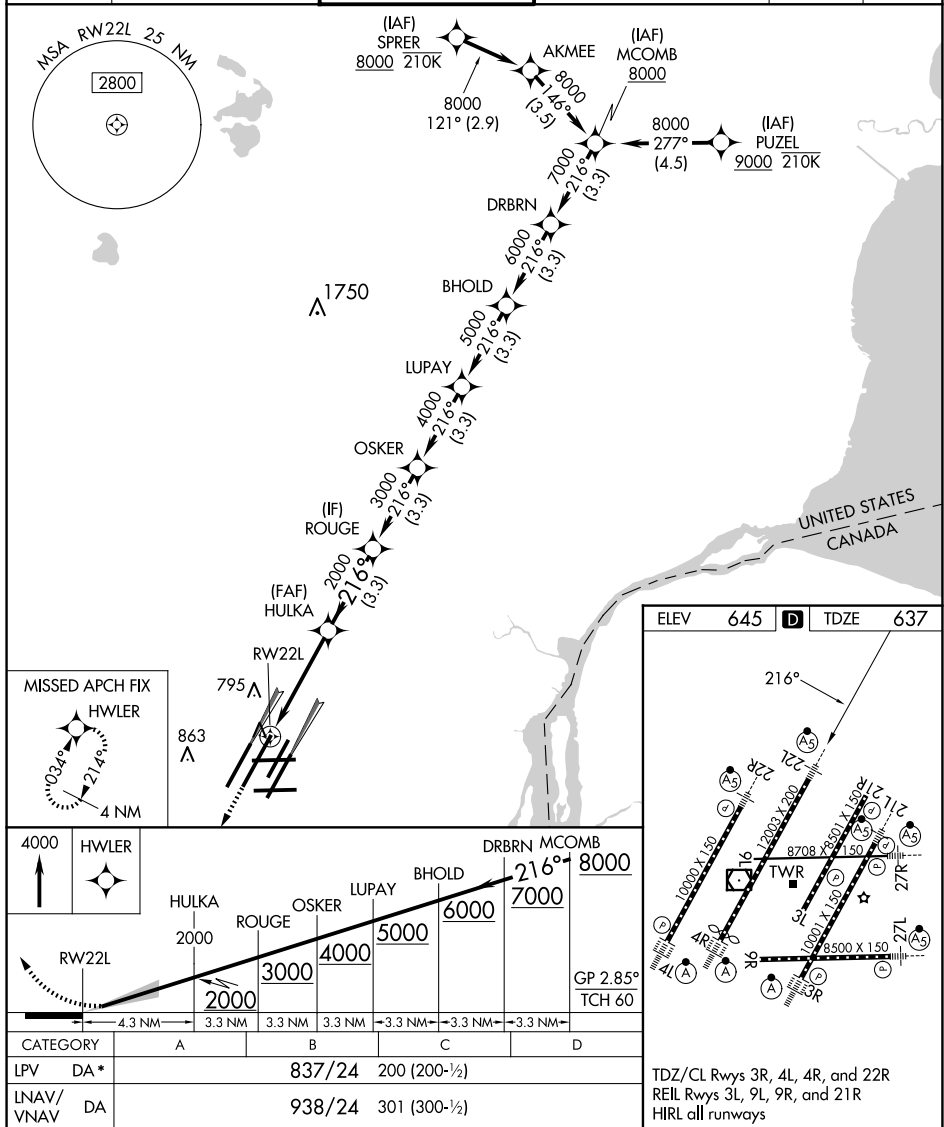
RNP APCH.

For uncompensated Baro-VNAV systems, LNAV/VNAV NA below -10°C or above 54°C. Simultaneous approach authorized. Use of FD or AP required during simultaneous operations. Dual VHF comm required. See additional requirements on AAUP. For inop ALS, increase LNAV/VNAV all Cats visibility to RVR 4500.
* RVR 1800 authorized with use of FD or AP or HUD to DRA.



MISSED APPROACH:
Climb to 4000 direct
HWLER and hold.

D-ATIS 133.675	DETROIT APP CON 124.05 284.0	METRO TOWER 128.125 317.725 PRM 135.775	GND CON 121.8 (NW) 119.45 (NE) 132.725 (SW) 119.25 (SE)	CLNC DEL 120.65	CPDLC
--------------------------	--	---	---	---------------------------	-------



DETROIT, MICHIGAN
Amdt 1A 28FEB19

42°13'N-83°21'W

DETROIT METRO WAYNE COUNTY (DTW)

RNAV (GPS) PRM Z RWY 22L (CLOSE PARALLEL)

EC-1, 10 JUL 2025 to 07 AUG 2025

EC-1, 10 JUL 2025 to 07 AUG 2025