

RNAV (GPS) PRM Y RWY 4L
(CLOSE PARALLEL)

DETROIT METRO WAYNE COUNTY (DTW)

WAAS CH 82439 W04A	APP CRS 038°	Rwy Ldg 10000 TDZE 645 Apt Elev 645
--	------------------------	--

RNP APCH.

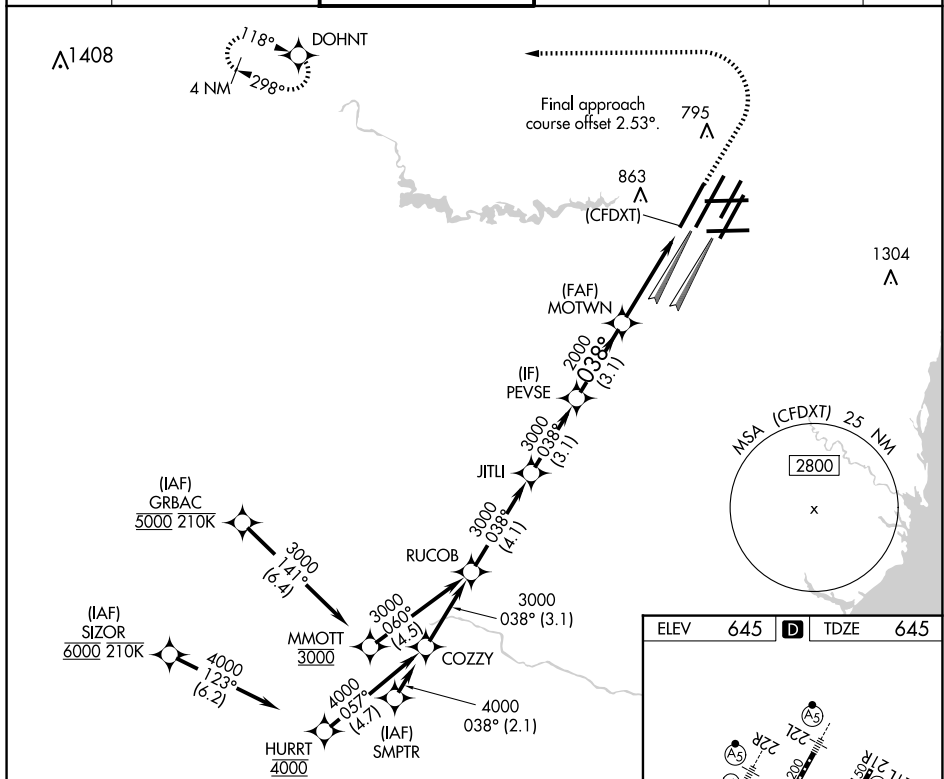
T Rwy 4L and 4R separated by 3000 feet centerline to centerline. For uncompensated Baro-VNAV systems, LNAV/VNAV NA below -19°C or above 54°C. Simultaneous approach authorized. Use of FD or AP required during simultaneous operations. Dual VHF comm required. See additional requirements on AAUP.

ALSF-2

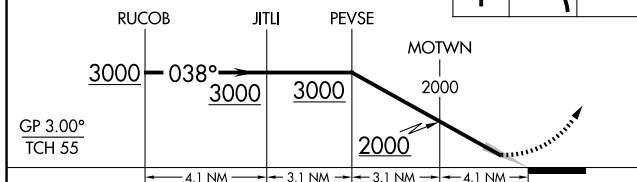


MISSED APPROACH:
Climb to 1100 then
climbing left turn to 4000
direct DOHNT and hold.

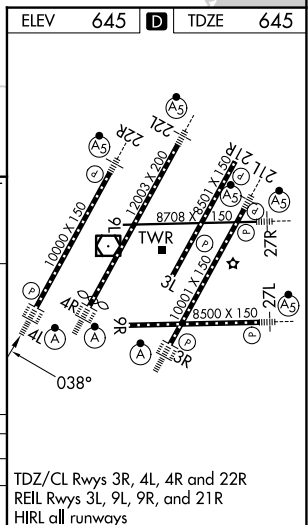
D-ATIS 133.675	DETROIT APP CON 124.05 284.0	METRO TOWER 135.0 317.725 PRM 127.05	GND CON 121.8 (NW) 119.45 (NE) 132.725 (SW) 119.25 (SE)	CLNC DEL 120.65	CPDLC
-------------------	---------------------------------	--	---	--------------------	-------



VGSI and RNAV glidepath not coincident
(VGSI Angle 3.00/TCH 71).



CATEGORY		A	B	C	D
LPV	DA	895/24		250 (300-½)	
LNAV/ VNAV	DA	1068/45		423 (500-¾)	



DETROIT, MICHIGAN

42°13'N-83°21'W

DETROIT METRO WAYNE COUNTY (DTW)

Orig-B 07SEP23

RNAV (GPS) PRM Y RWY 4L (CLOSE PARALLEL)

EC-1, 10 JUL 2025 to 07 AUG 2025

EC-1, 10 JUL 2025 to 07 AUG 2025