

| | | | |
|--|------------------------|-----------------------------|---|
| WAAS CH 53300 W27B | APP CRS 276° | Rwy Ldg TDZE Apt Elev | 8500 630 645 |
|--|------------------------|-----------------------------|---|

RNAV (GPS) RWY 27L

DETROIT METRO WAYNE COUNTY (DTW)

RNP APCH

▼

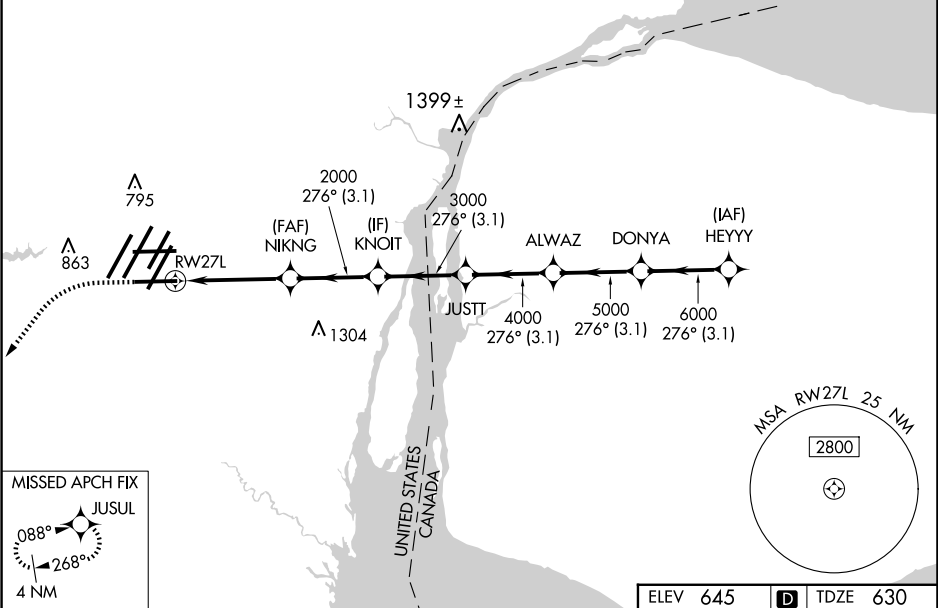
For uncompensated Baro-VNAV systems, LNAV/VNAV NA below -19°C (-2°F) or above 54°C (130°F). Simultaneous approach authorized. LNAV procedure NA during simultaneous operations. Use of FD or AP required during simultaneous operations. For inop ALS, increase LNAV/VNAV all Cats visibility to RVR 5000. ** RVR 1800 authorized with use of FD or AP or HUD to DA.

MALSR

MISSED APPROACH:

Climb to 1100 then climbing left turn to 4000 direct JUSUL and hold.

| | | | | | |
|--------------------------|--|--------------------------------------|---|---------------------------|-------|
| D-ATIS 133.675 | DETROIT APP CON 124.05 284.0 | METRO TOWER 128.75 317.725 | GND CON 121.8 (NW) 119.45 (NE) 132.725 (SW) 119.25 (SE) | CLNC DEL 120.65 | CPDLC |
|--------------------------|--|--------------------------------------|---|---------------------------|-------|



1100

4000

JUSUL

↑

↷

✦

1.2

2.9 NM

3.1 NM

3.1 NM

3.1 NM

3.1 NM

3.1 NM

1.2

2.9 NM

3.1 NM

3.1 NM

3.1 NM

3.1 NM

3.1 NM

1.2

2.9 NM

3.1 NM

3.1 NM

3.1 NM

3.1 NM

3.1 NM

1.2

2.9 NM

3.1 NM

3.1 NM

3.1 NM

3.1 NM

3.1 NM

1.2

2.9 NM

3.1 NM

3.1 NM

3.1 NM

3.1 NM

3.1 NM

1.2

2.9 NM

3.1 NM

3.1 NM

3.1 NM

3.1 NM

3.1 NM

1.2

2.9 NM

3.1 NM

3.1 NM

3.1 NM

3.1 NM

3.1 NM

1.2

2.9 NM

3.1 NM

3.1 NM

3.1 NM

3.1 NM

3.1 NM

1.2

2.9 NM

3.1 NM

3.1 NM

3.1 NM

3.1 NM

3.1 NM

1.2

2.9 NM

3.1 NM

3.1 NM

3.1 NM

3.1 NM

3.1 NM

1.2

2.9 NM

3.1 NM

3.1 NM

3.1 NM

3.1 NM

3.1 NM

1.2

2.9 NM

3.1 NM

3.1 NM

3.1 NM

3.1 NM

3.1 NM

1.2

2.9 NM

3.1 NM

3.1 NM

3.1 NM

3.1 NM

3.1 NM

1.2

2.9 NM

3.1 NM

3.1 NM

3.1 NM

3.1 NM

3.1 NM

1.2

2.9 NM

3.1 NM

3.1 NM

3.1 NM

3.1 NM

3.1 NM

1.2

2.9 NM

3.1 NM

3.1 NM

3.1 NM

3.1 NM

3.1 NM

1.2

2.9 NM

3.1 NM

3.1 NM

3.1 NM

3.1 NM

3.1 NM

1.2

2.9 NM

3.1 NM

3.1 NM

3.1 NM

3.1 NM

3.1 NM

1.2

2.9 NM

3.1 NM

3.1 NM

3.1 NM

3.1 NM

3.1 NM

1.2

2.9 NM

3.1 NM

3.1 NM

3.1 NM

3.1 NM

3.1 NM

1.2

2.9 NM

3.1 NM

3.1 NM

3.1 NM

3.1 NM

3.1 NM

1.2

2.9 NM

3.1 NM

3.1 NM

3.1 NM

3.1 NM

3.1 NM

1.2

2.9 NM

3.1 NM

3.1 NM

3.1 NM

3.1 NM

3.1 NM

1.2

2.9 NM

3.1 NM

3.1 NM

3.1 NM

3.1 NM

3.1 NM

1.2

2.9 NM

3.1 NM

3.1 NM

3.1 NM

3.1 NM

3.1 NM

1.2

2.9 NM

3.1 NM

3.1 NM

3.1 NM

3.1 NM

3.1 NM

1.2

2.9 NM

3.1 NM

3.1 NM

3.1 NM

3.1 NM

3.1 NM

1.2

2.9 NM

3.1 NM

3.1 NM

3.1 NM

3.1 NM

3.1 NM

1.2

2.9 NM

3.1 NM

3.1 NM

3.1 NM

3.1 NM

3.1 NM

1.2

2.9 NM

3.1 NM

3.1 NM

3.1 NM

3.1 NM

3.1 NM

1.2

2.9 NM

3.1 NM

3.1 NM

3.1 NM

3.1 NM

3.1 NM

1.2

2.9 NM

3.1 NM

3.1 NM

3.1 NM

3.1 NM

3.1 NM

1.2

2.9 NM

3.1 NM

3.1 NM

3.1 NM

3.1 NM

3.1 NM

1.2

2.9 NM

3.1 NM

3.1 NM

3.1 NM

3.1 NM

3.1 NM

1.2

2.9 NM

3.1 NM

3.1 NM

3.1 NM

3.1 NM

3.1 NM

1.2

2.9 NM

3.1 NM

3.1 NM

3.1 NM

3.1 NM

3.1 NM

1.2

2.9 NM

3.1 NM

3.1 NM

3.1 NM

3.1 NM

3.1 NM

1.2

2.9 NM

3.1 NM

3.1 NM

3.1 NM

3.1 NM

3.1 NM

1.2

2.9 NM

3.1 NM

3.1 NM

3.1 NM

3.1 NM

3.1 NM

1.2

2.9 NM

3.1 NM

3.1 NM

3.1 NM

3.1 NM

3.1 NM

1.2

2.9 NM

3.1 NM

3.1 NM

3.1 NM

3.1 NM

3.1 NM

1.2

2.9 NM

3.1 NM

3.1 NM

3.1 NM

3.1 NM

3.1 NM

1.2

2.9 NM

3.1 NM

3.1 NM

3.1 NM

3.1 NM

3.1 NM

1.2

2.9 NM

3.1 NM

3.1 NM

3.1 NM

3.1 NM

3.1 NM

1.2

2.9 NM

3.1 NM

3.1 NM

3.1 NM

3.1 NM

3.1 NM

1.2

2.9 NM

3.1 NM

3.1 NM

3.1 NM

3.1 NM

3.1 NM

1.2

2.9 NM

3.1 NM

3.1 NM

3.1 NM

3.1 NM

3.1 NM

1.2

2.9 NM

3.1 NM

3.1 NM

3.1 NM

3.1 NM

3.1 NM

1.2

2.9 NM

3.1 NM

3.1 NM

3.1 NM

3.1 NM

3.1 NM

1.2

2.9 NM

3.1 NM

3.1 NM

3.1 NM

3.1 NM

3.1 NM

1.2

2.9 NM

3.1 NM

3.1 NM

3.1 NM

3.1 NM

3.1 NM

1.2

2.9 NM

3.1 NM

3.1 NM

3.1 NM

3.1 NM

3.1 NM

1.2

2.9 NM

3.1 NM

3.1 NM

3.1 NM

3.1 NM

3.1 NM

1.2

2.9 NM

3.1 NM

3.1 NM

3.1 NM

3.1 NM

3.1 NM

1.2

2.9 NM

3.1 NM

3.1 NM

3.1 NM

3.1 NM

3.1 NM

1.2

2.9 NM

3.1 NM

3.1 NM

3.1 NM

3.1 NM

3.1 NM

1.2

2.9 NM

3.1 NM

3.1 NM

3.1 NM

3.1 NM

3.1 NM

1.2

2.9 NM

3.1 NM

3.1 NM

3.1 NM

3.1 NM

3.1 NM

1.2

2.9 NM

3.1 NM

3.1 NM

3.1 NM

3.1 NM

3.1 NM

1.2

2.9 NM

3.1 NM

3.1 NM

3.1 NM

3.1 NM

3.1 NM

1.2

2.9 NM

3.1 NM

3.1 NM

3.1 NM

3.1 NM

3.1 NM

1.2

2.9 NM

3.1 NM

3.1 NM

3.1 NM

3.1 NM

3.1 NM

1.2

2.9 NM

3.1 NM

3.1 NM

3.1 NM

3.1 NM

3.1 NM

1.2

2.9 NM

3.1 NM

3.1 NM

3.1 NM

3.1 NM

3.1 NM

1.2

2.9 NM

3.1 NM

3.1 NM

3.1 NM

3.1 NM

3.1 NM

1.2

2.9 NM

3.1 NM

3.1 NM

3.1 NM

3.1 NM

3.1 NM

1.2

2.9 NM

3.1 NM

3.1 NM

3.1 NM

3.1 NM

3.1 NM

1.2

2.9 NM

3.1 NM

3.1 NM

3.1 NM

3.1 NM

3.1 NM

1.2

2.9 NM

3.1 NM

3.1 NM

3.1 NM

3.1 NM

3.1 NM

1.2

2.9 NM

3.1 NM

3.1 NM

3.1 NM

3.1 NM

3.1 NM

1.2

2.9 NM

3.1 NM

3.1 NM

3.1 NM

3.1 NM

3.1 NM

1.2

2.9 NM

3.1 NM

3.1 NM

3.1 NM

3.1 NM

3.1 NM

1.2

2.9 NM

3.1 NM

3.1 NM

3.1 NM

3.1 NM

3.1 NM

1.2

2.9 NM

3.1 NM

3.1 NM

3.1 NM

3.1 NM

3.1 NM

1.2

2.9 NM

3.1 NM

3.1 NM

3.1 NM

3.1 NM

3.1 NM

1.2

2.9 NM

3.1 NM

3.1 NM

3.1 NM

3.1 NM

3.1 NM

1.2

2.9 NM

3.1 NM

3.1 NM

3.1 NM

3.1 NM

3.1 NM

1.2

2.9 NM

3.1 NM

3.1 NM

3.1 NM

3.1 NM

3.1 NM

1.2

2.9 NM

3.1 NM

3.1 NM

3.1 NM

3.1 NM

3.1 NM

1.2

2.9 NM

3.1 NM

3.1 NM

3.1 NM

3.1 NM

3.1 NM

1.2

2.9 NM

3.1 NM

3.1 NM

3.1 NM

3.1 NM

3.1 NM

1.2

2.9 NM

3.1 NM

3.1 NM

3.1 NM

3.1 NM

3.1 NM

1.2

2.9 NM

3.1 NM

3.1 NM

3.1 NM

3.1 NM

3.1 NM

1.2

2.9 NM

3.1 NM

3.1 NM

3.1 NM

3.1 NM

3.1 NM

1.2

2.9 NM

3.1 NM

3.1 NM

3.1 NM

3.1 NM

3.1 NM

1.2

2.9 NM

3.1 NM

3.1 NM

3.1 NM

3.1 NM

3.1 NM

1.2

2.9 NM

3.1 NM

3.1 NM

3.1 NM

3.1 NM

3.1 NM

1.2

2.9 NM

3.1 NM

3.1 NM

3.1 NM

3.1 NM

3.1 NM

1.2

2.9 NM

3.1 NM

3.1 NM

3.1 NM

3.1 NM

3.1 NM

1.2

2.9 NM

3.1 NM

3.1 NM

3.1 NM

3.1 NM

3.1 NM

1.2

2.9 NM

3.1 NM

3.1 NM

3.1 NM

3.1 NM

3.1 NM

1.2

2.9 NM

3.1 NM

3.1 NM

3.1 NM

3.1 NM

3.1 NM

1.2

2.9 NM

3.1 NM

3.1 NM

3.1 NM

3.1 NM

3.1 NM

1.2

2.9 NM

3.1 NM

3.1 NM

3.1 NM

3.1 NM

3.1 NM

1.2

2.9 NM

3.1 NM

3.1 NM

3.1 NM

3.1 NM

3.1 NM

1.2

2.9 NM

3.1 NM

3.1 NM

3.1 NM

3.1 NM

3.1 NM

1.2

2.9 NM

3.1 NM

3.1 NM

3.1 NM

3.1 NM

3.1 NM

1.2

2.9 NM

3.1 NM

3.1 NM

3.1 NM

3.1 NM

3.1 NM

1.2

2.9 NM

3.1 NM

3.1 NM

3.1 NM

3.1 NM

3.1 NM

1.2

2.9 NM

3.1 NM

3.1 NM

3.1 NM

3.1 NM

3.1 NM

1.2

2.9 NM

3.1 NM

3.1 NM

3.1 NM

3.1 NM

3.1 NM

1.2

2.9 NM

3.1 NM

3.1 NM

3.1 NM

3.1 NM

3.1 NM

1.2

2.9 NM

3.1 NM

3.1 NM

3.1 NM

3.1 NM

3.1 NM

1.2

2.9 NM

3.1 NM

3.1 NM

3.1 NM

3.1 NM

3.1 NM

1.2

2.9 NM

3.1 NM

3.1 NM

3.1 NM

3.1 NM

3.1 NM

1.2

2.9 NM

3.1 NM

3.1 NM

3.1 NM

3.1 NM

3.1 NM

1.2

2.9 NM

3.1 NM

3.1 NM

3.1 NM

3.1 NM

3.1 NM

1.2

2.9 NM

3.1 NM

3.1 NM

3.1 NM

3.1 NM

3.1 NM

1.2

2.9 NM

3.1 NM

3.1 NM

3.1 NM

3.1 NM

3.1 NM

1.2

2.9 NM

3.1 NM

3.1 NM

3.1 NM

3.1 NM

3.1 NM

1.2

2.9 NM

3.1 NM

3.1 NM

3.1 NM

3.1 NM

3.1 NM

1.2

2.9 NM

3.1 NM

3.1 NM

3.1 NM

3.1 NM

3.1 NM

1.2

2.9 NM

3.1 NM

3.1 NM

3.1 NM

3.1 NM

3.1 NM

1.2

2.9 NM

3.1 NM

3.1 NM

3.1 NM

3.1 NM

3.1 NM

1.2

2.9 NM

3.1 NM

3.1 NM

3.1 NM

3.1 NM

3.1 NM

1.2

2.9 NM

3.1 NM

3.1 NM

3.1 NM

3.1 NM

3.1 NM

1.2

2.9 NM

3.1 NM

3.1 NM

3.1 NM

3.1 NM

3.1 NM

1.2

2.9 NM

3.1 NM

3.1 NM

3.1 NM

3.1 NM

3.1 NM

1.2

2.9 NM

3.1 NM

3.1 NM

3.1 NM

3.1 NM

3.1 NM

1.2

2.9 NM

3.1 NM

3.1 NM

3.1 NM

3.1 NM

3.1 NM

1.2

2.9 NM

3.1 NM

3.1 NM

3.1 NM

3.1 NM

3.1 NM

1.2

2.9 NM

3.1 NM

3.1 NM

3.1 NM

3.1 NM

3.1 NM

1.2

2.9 NM

3.1 NM

3.1 NM

3.1 NM

3.1 NM

3.1 NM

1.2

2.9 NM

3.1 NM

3.1 NM

3.1 NM

3.1 NM

3.1 NM

1.2

2.9 NM

3.1 NM

3.1 NM

3.1 NM

3.1 NM

3.1 NM

1.2

2.9 NM

3.1 NM

3.1 NM

3.1 NM

3.1 NM

3.1 NM

1.2

2.9 NM

3.1 NM

3.1 NM

3.1 NM

3.1 NM

3.1 NM

1.2

2.9 NM

3.1 NM

3.1 NM

3.1 NM

3.1 NM

3.1 NM

1.2

2.9 NM

3.1 NM

3.1 NM

3.1 NM

3.1 NM

3.1 NM

1.2

2.9 NM

3.1 NM

3.1 NM

3.1 NM

3.1 NM

3.1 NM

1.2

2.9 NM

3.1 NM

3.1 NM

3.1 NM

3.1 NM

3.1 NM

1.2

2.9 NM

3.1 NM

3.1 NM

3.1 NM

3.1 NM

3.1 NM

1.2

2.9 NM

3.1 NM

3.1 NM

3.1 NM

3.1 NM

3.1 NM

1.2

2.9 NM

3.1 NM

3.1 NM

3.1 NM

3.1 NM

3.1 NM

1.2

2.9 NM

3.1 NM

3.1 NM

3.1 NM

3.1 NM

3.1 NM

1.2

2.9 NM

3.1 NM

3.1 NM

3.1 NM

3.1 NM

3.1 NM

1.2

2.9 NM

3.1 NM

3.1 NM

3.1 NM

3.1 NM

3.1 NM

1.2

2.9 NM

3.1 NM

3.1 NM

3.1 NM

3.1 NM

3.1 NM

1.2

2.9 NM

3.1 NM

3.1 NM

3.1 NM

3.1 NM

3.1 NM

1.2

2.9 NM

3.1 NM

3.1 NM

3.1 NM

3.1 NM

3.1 NM

1.2

2.9 NM

3.1 NM

3.1 NM

3.1 NM

3.1 NM

3.1 NM

1.2

2.9 NM

3.1 NM

3.1 NM

3.1 NM

3.1 NM

3.1 NM

1.2

2.9 NM

3.1 NM

3.1 NM

3.1 NM

3.1 NM

3.1 NM

1.2

2.9 NM

3.1 NM

3.1 NM

3.1 NM

3.1 NM

3.1 NM

1.2

2.9 NM

3.1 NM

3.1 NM

3.1 NM

3.1 NM

3.1 NM

1.2

2.9 NM

3.1 NM

3.1 NM

3.1 NM

3.1 NM

3.1 NM

1.2

2.9 NM

3.1 NM

3.1 NM

3.1 NM

3.1 NM

3.1 NM

1.2

2.9 NM

3.1 NM

3.1 NM

3.1 NM

3.1 NM

3.1 NM

1.2

2.9 NM

3.1 NM

3.1 NM

3.1 NM

3.1 NM

3.1 NM

1.2

2.9 NM

3.1 NM

3.1 NM

3.1 NM

3.1 NM

3.1 NM

1.2

2.9 NM

3.1 NM

3.1 NM

3.1 NM

3.1 NM

3.1 NM

1.2

2.9 NM

3.1 NM

3.1 NM

