

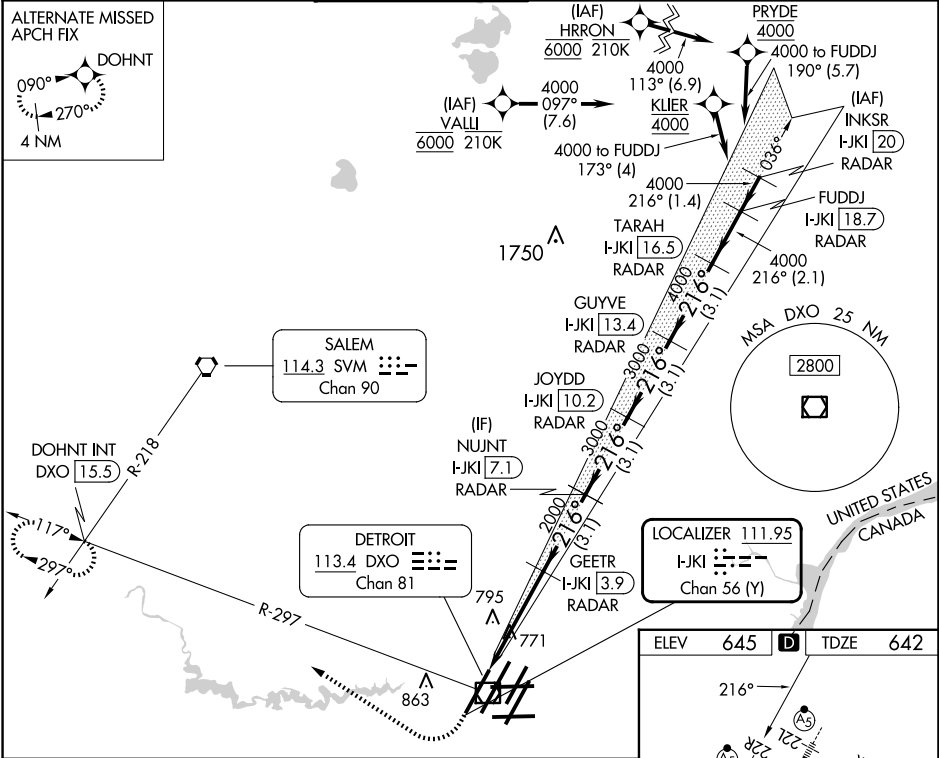
LOC/DME I-JKI 111.95 Chan 56 (Y)	APP CRS 216°	Rwy Ldg TDZE 642 Apt Elev 645
--	------------------------	---

ILS Z or LOC RWY 22R
DETROIT METRO WAYNE COUNTY (DTW)

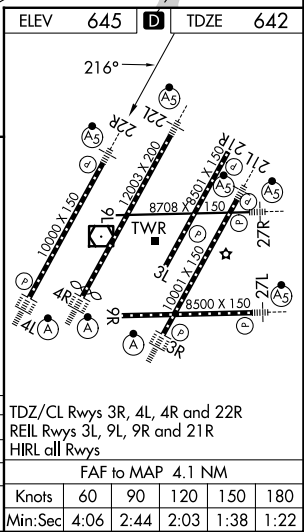
RNAV 1-GPS. HRRON and VALLI: RNAV 1-DME/DME/IRU or GPS required.
Aircraft not DME/DME/IRU or GPS equipped - RADAR required for procedure entry.
Simultaneous approach authorized.
**RVR 1800 authorized with use of FD or AP or HUD to DA.

MALSR MISSED APPROACH: Climb to 1100 then climbing right turn to 4000 on DXO VOR/DME R-297 to DOHNT INT/DXO 15.5 DME and hold.

D-ATIS 133.675	DETROIT APP CON 124.05 284.0	METRO TOWER 135.0 317.725	GND CON 121.8 (NW) 119.45 (NE) 132.725 (SW) 119.25 (SE)	CLNC DEL 120.65	CPDLC
--------------------------	--	-------------------------------------	---	---------------------------	-------



1100 4000	DXO R-297	DOHNT INT	VGSI and ILS glidepath not coincident (VGSI Angle 3.00/TCH 71).				
*LOC only.	GEETR I-JKI [3.9] RADAR	NUJNT I-JKI [7.1] RADAR	JOYDD I-JKI [10.2] RADAR	GUYVE I-JKI [13.4] RADAR	TARAH I-JKI [16.5] RADAR	FUDDJ I-JKI [18.7] RADAR	
I-JKI DME ANTENNA I-JKI [0.2]	2000	3000	3000	4000	4000	4000	GS 3.00° TCH 55
11056	1.1 NM	3.1 NM	3.1 NM	3.1 NM	3.1 NM	2.1 NM	
CATEGORY	A	B	C	D			
S-ILS 22R**	842/24		200 (200-1/2)		1060/40		418 (500-3/4)
S-LOC 22R	1060/24	418 (500-1/2)	1180-1 535 (600-1)		1180-1 535 (600-1/2)		1240-2 595 (600-2)
CIRCLING	1180-1	535 (600-1)					



EC-1, 10 JUL 2025 to 07 AUG 2025

EC-1, 10 JUL 2025 to 07 AUG 2025