

ILS PRM Z RWY 4L  
(CLOSE PARALLEL)

DETROIT METRO WAYNE COUNTY (DTW)

LOC/DME I-HJT <b>111.95</b> Chan <b>56</b> (Y)	APP CRS <b>036°</b>	Rwy Ldg <b>10000</b> TDZE <b>645</b> Apt Elev <b>645</b>
--	------------------------	--

From GRBAC, SIZOR: RNAV 1-DME/DME/IRU or GPS required. Aircraft not DME/DME/IRU or GPS equipped - RADAR required for procedure entry. DME or RADAR required.

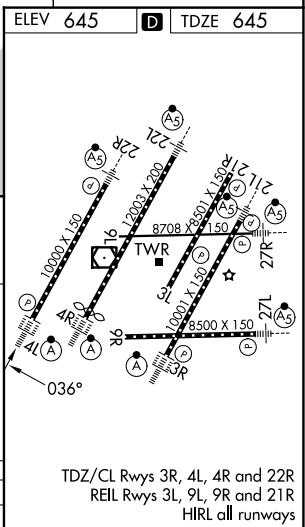
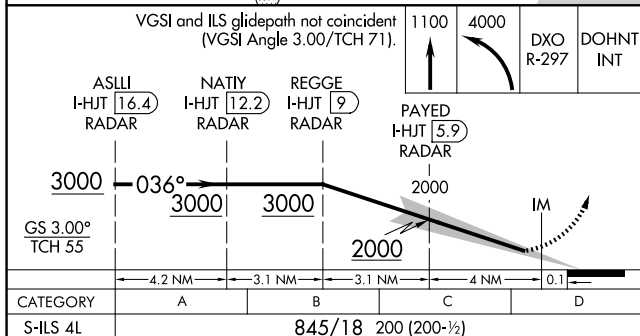
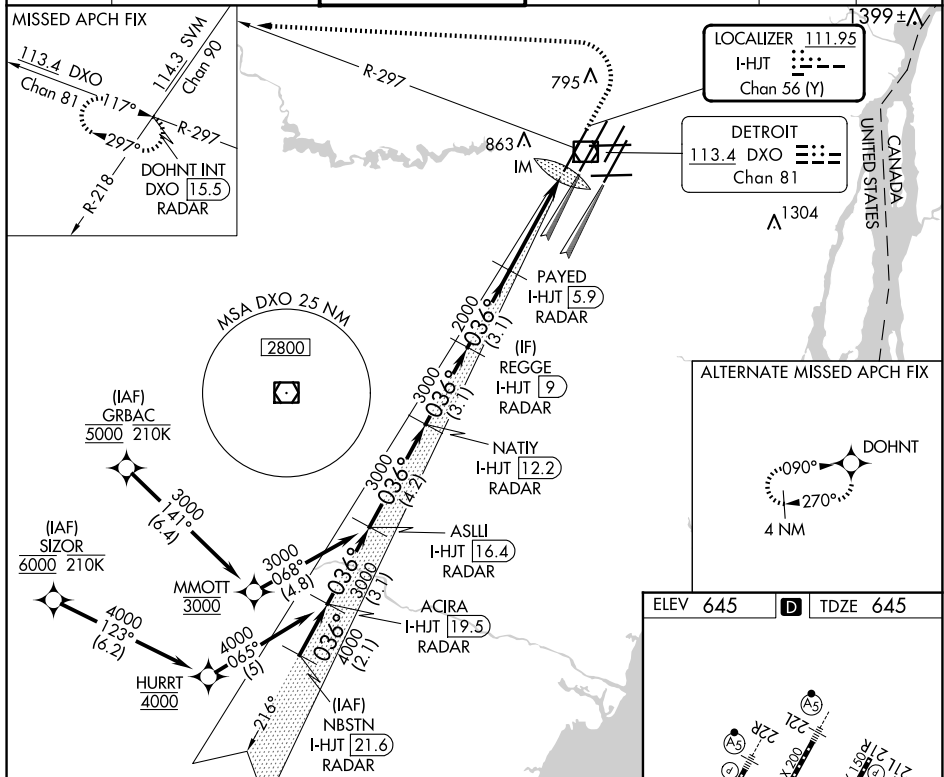
**T** Simultaneous approach authorized. Use of FD or AP required during simultaneous operations. Dual VHF Comm required. See additional requirements on AAUP.

ALSF-2



**MISSED APPROACH:** Climb to 1100 then climbing left turn to 4000 on DXO VOR/DME R-297 to DOHNT INT/DXO 15.5 DME/RADAR and hold.

D-ATIS <b>133.675</b>	DETROIT APP CON <b>124.05 284.0</b>	METRO TOWER <b>135.0 317.725</b> <b>PRM 127.05</b>	GND CON <b>121.8 (NW) 119.45 (NE)</b> <b>132.725 (SW) 119.25 (SE)</b>	CLNC DEL <b>120.65</b>	CPDLC
--------------------------	--	--	---	---------------------------	-------



DETROIT, MICHIGAN

Orig-B 30JAN20

42°13'N-83°21'W

DETROIT METRO WAYNE COUNTY (DTW)

ILS PRM Z RWY 4L (CLOSE PARALLEL)

EC-1, 10 JUL 2025 to 07 AUG 2025

EC-1, 10 JUL 2025 to 07 AUG 2025