
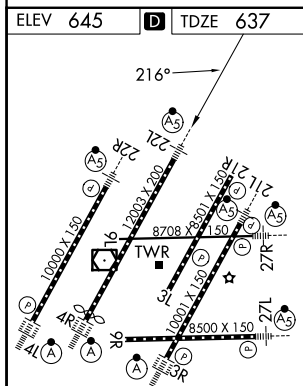


ILS or LOC RWY 22L
DETROIT METRO WAYNE COUNTY (DTW)

<p>MALSR</p> 	<p>MISSED APPROACH: Climb to 4000 on heading 216° and CRL VOR/DME R-025 to CRL VOR/DME and hold, continue climb-in-hold to 4000.</p>
--	--

MALSF

121.8 (NW)	119.45 (NE)	CLNC DEL	CPDLC
132.725 (SW)	119.25 (SE)	120.65	



TDZ/CL Rwy 3R, 4L, 4R and 22R
REIL Rwy 3L, 9L, 9R and 21R
HIRL all runways