

LOC/DME I-EJR 111.5 Chan 52	APP CRS 216°	Rwy Ldg TDZE 632 Apt Elev 645
---	------------------------	---

ILS or LOC RWY 21L
DETROIT METRO WAYNE COUNTY (DTW)

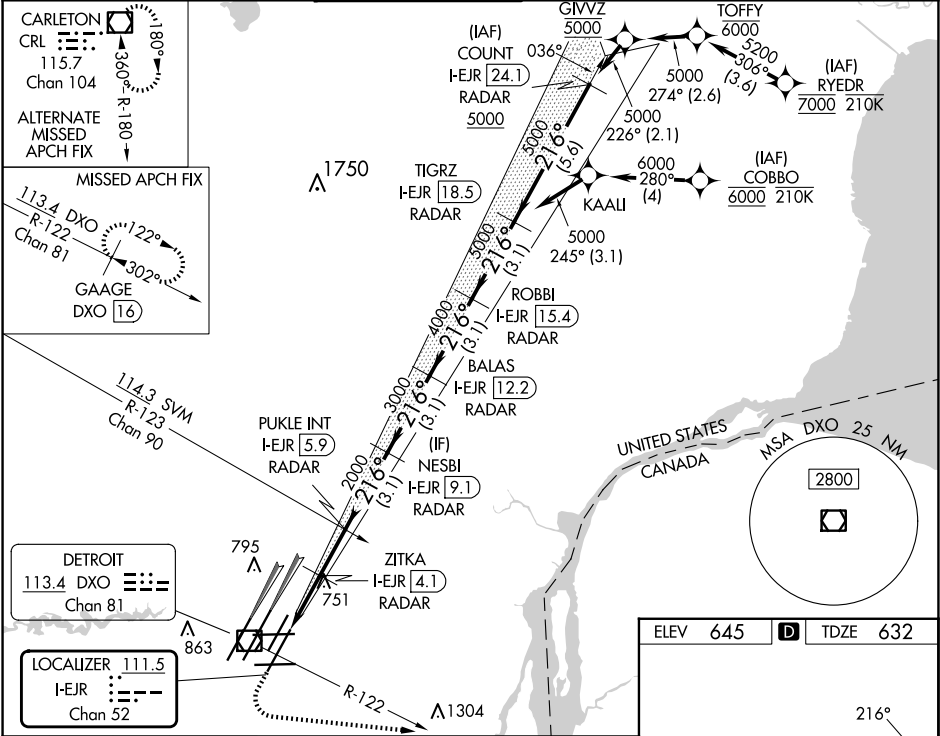
From RYEDR, COBBO: RNAV 1-DME/DME/IRU or GPS required. Aircraft not DME/DME/IRU or GPS equipped - RADAR required for procedure entry. DME or RADAR required.



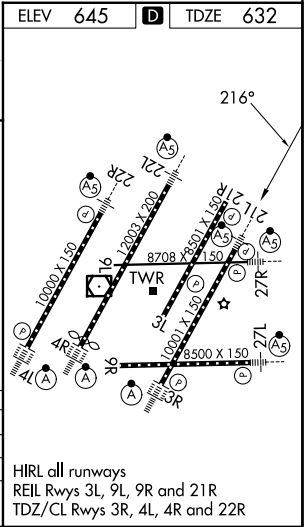
MISSED APPROACH: Climb to 1100 then climbing left turn to 4000 on DXO R-122 to GAAGE/DXO 16 DME and hold, continue climb-in-hold to 4000.

Simultaneous approach authorized.
**RVR 1800 authorized with use of FD or AP or HUD to DA.

D-ATIS 133.675	DETROIT APP CON 125.15 284.0	METRO TOWER 118.4 317.725	GND CON 121.8 (NW) 119.45 (NE) 132.725 (SW) 119.25 (SE)	CLNC DEL 120.65	CPDLC
--------------------------	--	-------------------------------------	---	---------------------------	-------



1100 ↑	4000 ↘	DXO R-122	GAAGE DXO 16	VGSI and ILS glidepath not coincident (VGSI Angle 3.00/TCH 80).			
* LOC only		ZITKA I-EJR RADAR	PUKLE INT I-EJR 5.9 RADAR	NESBI I-EJR 9.1 RADAR	BALAS I-EJR 12.2 RADAR	ROBBI I-EJR 15.4 RADAR	TIGRZ I-EJR 18.5 RADAR
		I-EJR 2.8	I-EJR 4.1	I-EJR 9.1	I-EJR 12.2	I-EJR 15.4	I-EJR 18.5
		I-EJR 1.8					
		1 NM	1.3 NM	1.8 NM	3.1 NM	3.1 NM	3.1 NM
				2000	3000	4000	5000
							216°
							GS 3.00° TCH 55



EC-1, 10 JUL 2025 to 07 AUG 2025

EC-1, 10 JUL 2025 to 07 AUG 2025