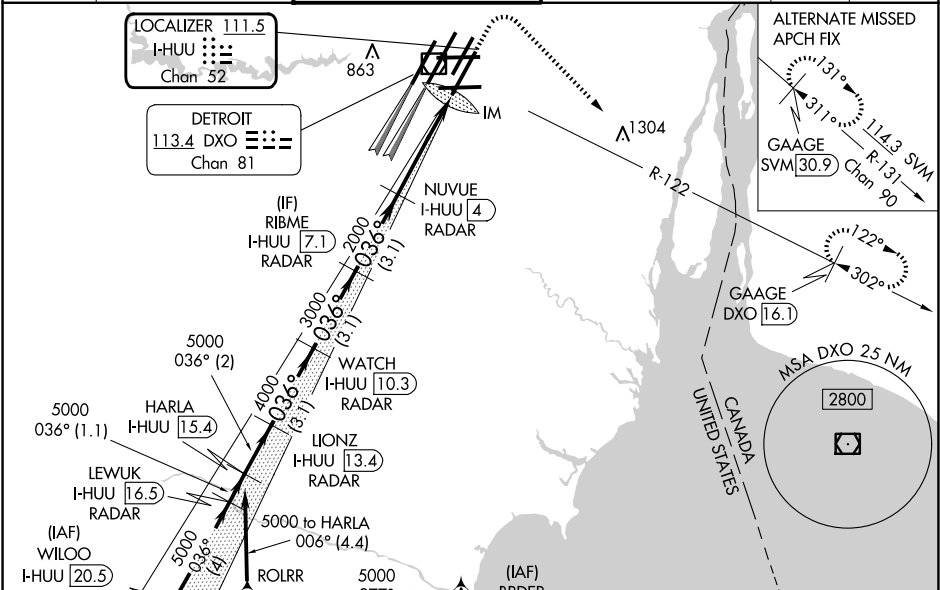


LOC/DME I-HUU	APP CRS	Rwy Ldg	10001
111.5	036°	TDZE	633
Chan 52		Apt Elev	645

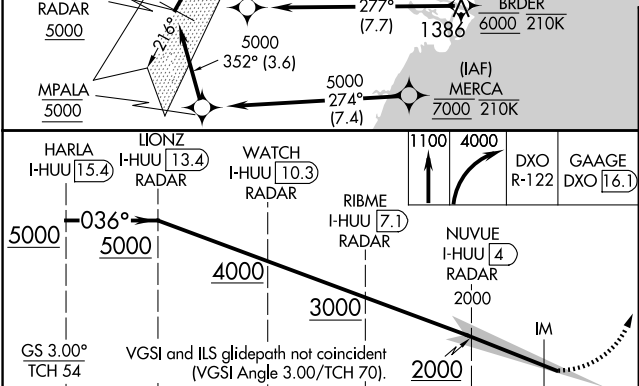
ILS RWY 3R (SA CAT I)
DETROIT METRO WAYNE COUNTY (DTW)

RNAV 1-GPS.	ALSF-2	MISSED APPROACH: Climb to 1100 then climbing right turn to 4000 on DXO VOR/DME R-122 to GAAGE/DXO 16.1 DME and hold.
MERCA and BRDER: RNAV 1-DME/DME/IRU or GPS required. Aircraft not DME/DME/IRU or GPS equipped - RADAR required for procedure entry.		
Simultaneous approach authorized. DME required. Requires specific OPSPEC, MSPEC, or LOA approval and use of HUD to DH.		

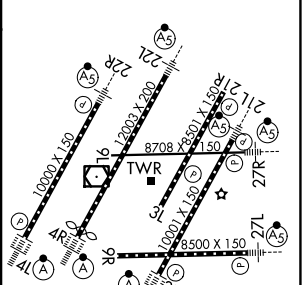
D-ATIS	DETROIT APP CON	METRO TOWER	GND CON	CLNC DEL	CPDLC
133.675	125.15 284.0	118.4 317.725	121.8 (NW) 119.45 (NE) 132.725 (SW) 119.25 (SE)	120.65	



ELEV 645	D	TDZE 633
HIRL all runways REIL Rwy 3L, 9L, 9R and 21R TDZ/CL Rwy 3R, 4L, 4R and 22R		



2 NM	3.1 NM	3.1 NM	3.1 NM	4.1 NM	10307
CATEGORY	A	B	C	D	
S-ILS 3R	RA 153/14 150 DA 783				
SA CATEGORY I ILS - SPECIAL AIRCREW & AIRCRAFT CERTIFICATION REQUIRED					



EC-1, 10 JUL 2025 to 07 AUG 2025

EC-1, 10 JUL 2025 to 07 AUG 2025