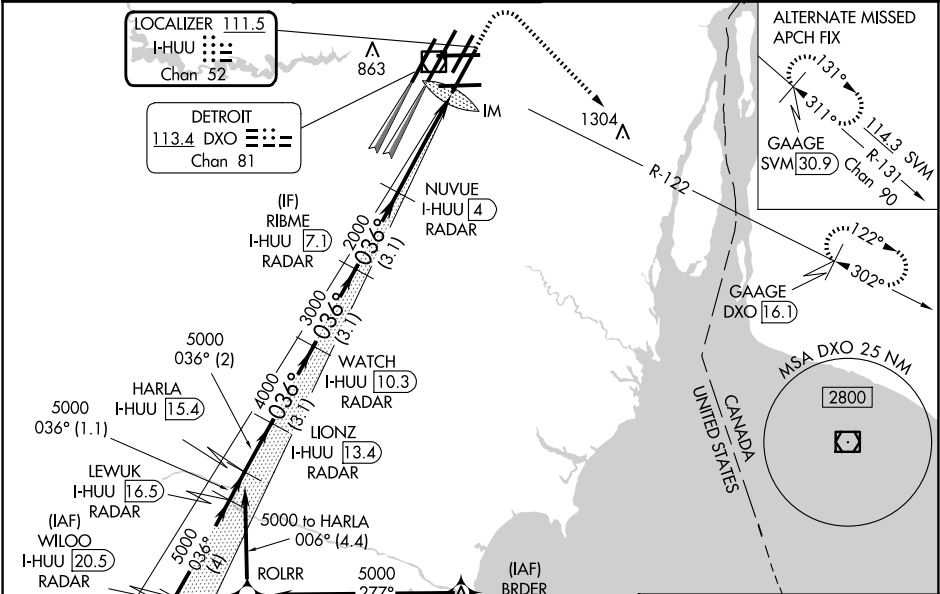


| | | |
|---|------------------------|--|
| LOC/DME I-HUU 111.5 Chan 52 | APP CRS 036° | Rwy Ldg 10001 TDZE 633 Apt Elev 645 |
|---|------------------------|--|

ILS RWY 3R (CAT II & III)
DETROIT METRO WAYNE COUNTY (DTW)

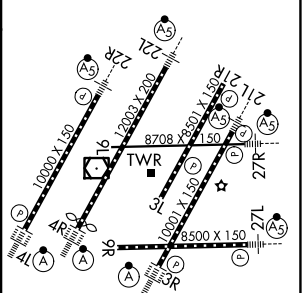
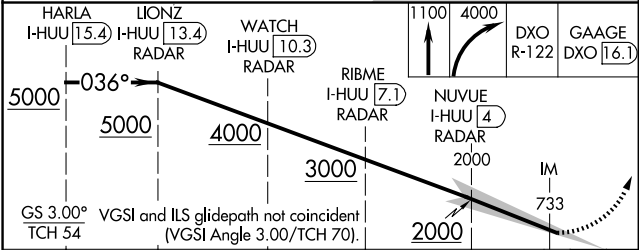
| | | |
|---|------------|--|
| RNAV 1-GPS. | ALSF-2 | MISSED APPROACH: Climb to 1100 then climbing right turn to 4000 on DXO VOR/DME R-122 to GAAGE/DXO 16.1 DME and hold. |
| MERCA and BRDER: RNAV 1-DME/DME/IRU or GPS required. Aircraft not DME/DME/IRU or GPS equipped - RADAR required for procedure entry. | | |
| Simultaneous approach authorized. DME required. RVR 1000 authorized with specific OPSPEC, MSPEC, or LOA approval and use of autoland or HUD to touchdown. | | |

| | | | | | |
|--------------------------|--|-------------------------------------|---|---------------------------|-------|
| D-ATIS 133.675 | DETROIT APP CON 125.15 284.0 | METRO TOWER 118.4 317.725 | GND CON 121.8 (NW) 119.45 (NE) 132.725 (SW) 119.25 (SE) | CLNC DEL 120.65 | CPDLC |
|--------------------------|--|-------------------------------------|---|---------------------------|-------|



| | |
|----------|-------------------|
| ELEV 645 | D TDZE 633 |
|----------|-------------------|

HIRL all runways
REIL Rwy 3L, 9L, 9R and 21R
TDZ/CL Rwy 3R, 4L, 4R and 22R



| | | | | |
|----------|-----------------------------|---|---|---|
| CATEGORY | A | B | C | D |
| S-ILS 3R | CAT II RA 101/12 100 DA 733 | | | |
| S-ILS 3R | CAT III RVR 06 | | | |

CATEGORY II & III ILS - SPECIAL AIRCREW
& AIRCRAFT CERTIFICATION REQUIRED