

LOC/DME I-EPA 110.15 Chan 38(Y)	APP CRS 276°	Rwy Ldg TDZE Apt Elev 8500 630 645
---	------------------------	--

ILS RWY 27L (SA CAT I & II)

DETROIT METRO WAYNE COUNTY (DTW)

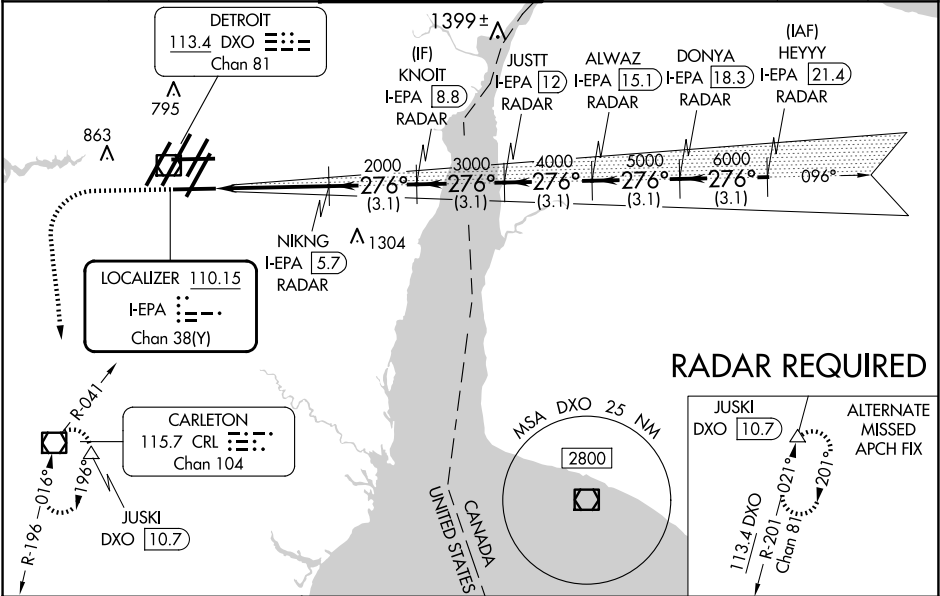
▼

DME or RADAR required. Simultaneous approach authorized.
SA Cat I: Requires specific OPSPEC, MSPEC, or LOA approval and use of HUD to DH.
SA Cat II: Reduced lighting: Requires specific OPSPEC, MSPEC, or LOA approval and use of Autoland or HUD to touchdown.

MALSR

MISSED APPROACH: Climb to 1100 then climbing left turn to 4000 on heading 180° and CRL VOR/DME R-041 to CRL VOR/DME and hold, continue climb-in-hold to 4000.

D-ATIS 133.675	DETROIT APP CON 124.05 284.0	METRO TOWER 128.75 317.725	GND CON 121.8 (NW) 119.45 (NE) 132.725 (SW) 119.25 (SE)	CLNC DEL 120.65	CPDLC
--------------------------	--	--------------------------------------	---	---------------------------	-------



ELEV 645 D TDZE 630

↑

hdg 180°

CRL R-041

VGSI and ILS glidepath not coincident (VGSI Angle 3.00/TCH 71).

27L

27R

21L

21R

16L

16R

15L

15R

14L

14R

13L

13R

12L

12R

11L

11R

10L

10R

9L

9R

8L

8R

7L

7R

6L

6R

5L

5R

4L

4R

3L

3R

2L

2R

1L

1R

TDZ/CL Rwy 3R, 4L, 4R and 22R
REIL Rwy 3L, 9L, 9R and 21R
HIRL all runways

1100

4000

CRL

VGSI and ILS glidepath not coincident (VGSI Angle 3.00/TCH 71).

HEYYY

DONYA

ALWAZ

JUSTT

KNOIT

NIKNG

276°

7000

6000

5000

4000

3000

2000

GS 3.00°

TCH 56

CATEGORY	A	B	C	D
S-ILS 27L	SA CAT I	RA 146/16	150 DA 780	
S-ILS 27L	SA CAT II	RA 96/16	100 DA 730	

SA CATEGORY I & II ILS SPECIAL AIRCREW & AIRCRAFT CERTIFICATION REQUIRED