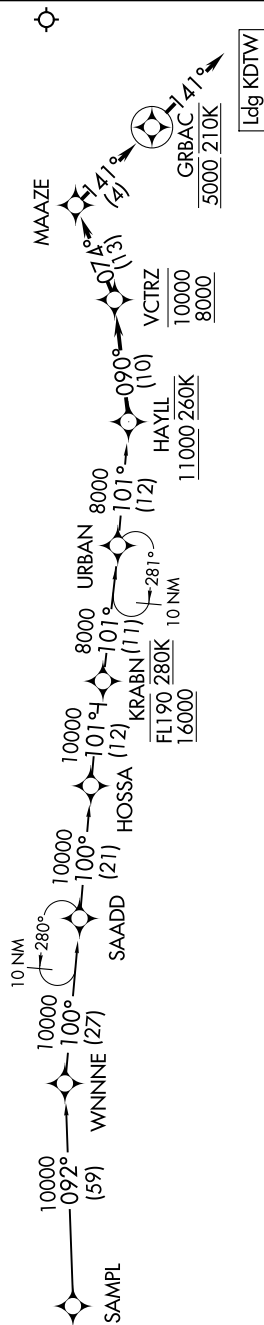


NOTE: RADAR required.  
NOTE: RNAV 1.  
NOTE: DME/DME/IRU or GPS required.  
NOTE: Expect Rwy 4L.  
NOTE: For use when DTW landing north.  
When DTW landing south or west and expect the VCTR RNAV STAR and expect the VCTR RNAV STAR.  
NOTE: For use by flights departing MDW, AZO, MCI, LAS, LAX, PHX, SAN, SNA airports only, or as assigned by ATC.



## ARRIVAL ROUTE DESCRIPTION

HOSSA TRANSITION (HOSSA.HAYLL3)

SAMPL TRANSITION (SAMPL.HAYLL3)

From HAYIL on track 090° to cross VCTRZ between 8000 and 10000, then on track 074° to MAAZE, then on track 141° to cross GRAC at 5000 and at 210K, then on track 141°. Expect RADAR vectors to final approach course.

## LOST COMMUNICATIONS

From GRBAC, execute RNAV (GPS) Y RWY 4L approach or ILS Y RWY 4L approach.

NOTE: Chart not to scale.