

NOTE: RADAR required.

NOTE: RNAV 1.

NOTE: DME/DME/IRU or GPS required.

NOTE: Expect Rwy 21L.

NOTE: Jet aircraft descend via Mach number until intercepting 280K. Maintain 280K until slowed by the STAR.

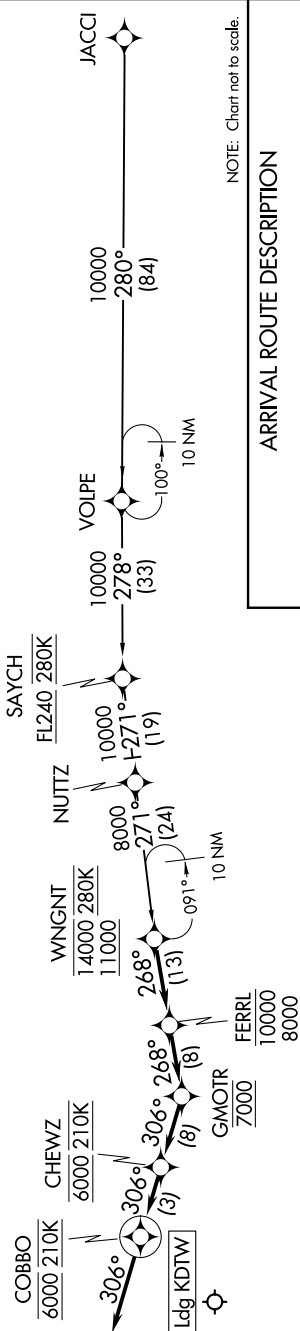
280K. Maintain 280K until slowed by the STAR.

NOTE: For use when DTW landing south or west. When DTW

landing north, file and expect the WNGNT RNAV STAR.



D-ATIS  
133.675  
DETROIT APP CON  
126.225 284.0



NOTE: Chart not to scale.

## ARRIVAL ROUTE DESCRIPTION

## JACCI TRANSITION (JACCI.FERRL2)

From WINGNT on track 268° to cross FERRL between 8000 and 10000, then on track 288° to cross GMOIR at 7000, then on track 306° to cross CHEWZ at 6000 and at 210K, then on track 306° to cross COBBO at 6000 and at 210K, then on track 306°. Expect RADAR vectors to final approach course.

**LOST COMMUNICATIONS:**

From COBBO, execute ILS Rwy 21L approach.

## FERRL TWO ARRIVAL (RNAV)

(WNGNT.FERRL2) 10OCT19

DETROIT, MICHIGAN

DETROIT METRO WAYNE COUNTY (DTW)