

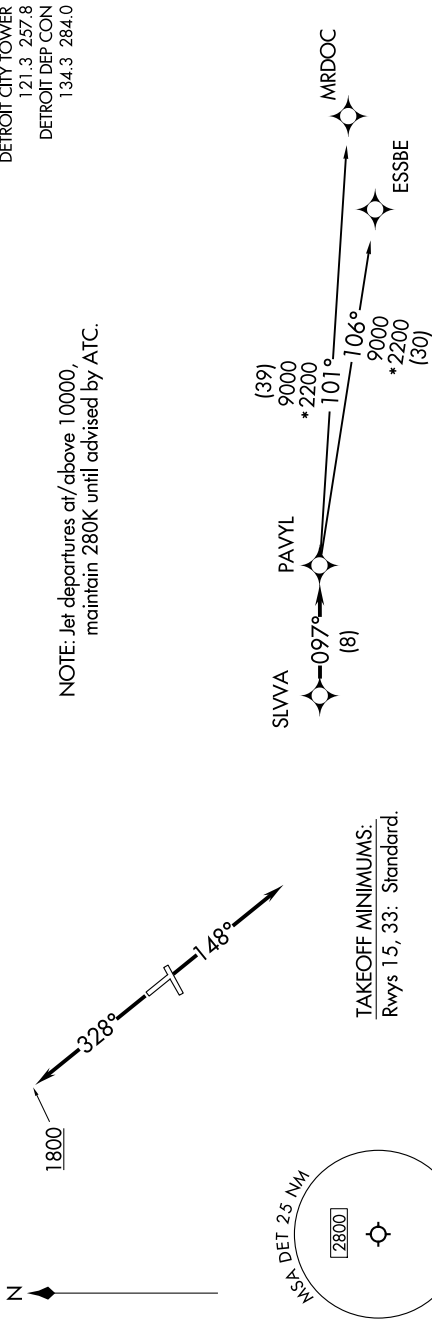
TOP ALTITUDE:
ASSIGNED BY ATC

RNAV 1 - DME/DME/IRU or GPS.
RADAR required.

(PAVYL3.PAVYL) 24137
PAVYL THREE DEPARTURE (RNAV)

AL-118 (FAA)

COLEMAN A YOUNG MUNI (DET)
DETROIT, MICHIGAN



NOTE: Chart not to scale.

DEPARTURE ROUTE DESCRIPTION

TAKEOFF RUNWAY 15: Climb on heading 148° or as assigned by ATC, thence....
TAKEOFF RUNWAY 33: Climb on heading 328° to 1800 then as assigned by ATC, thence....

.... for RADAR vectors to SLVA, then on track 097° to PAVYL, then on (transition). Maintain 17000 or as assigned by ATC, expect filed altitude 10 minutes after departure.

ESSBE TRANSITION (PAVYL3.ESSBE):
MRDOC TRANSITION (PAVYL3.MRDOC):

PAVYL THREE DEPARTURE (RNAV)
(PAVYL3.PAVYL) 16MAY24

DETROIT, MICHIGAN
COLEMAN A YOUNG MUNI (DET)