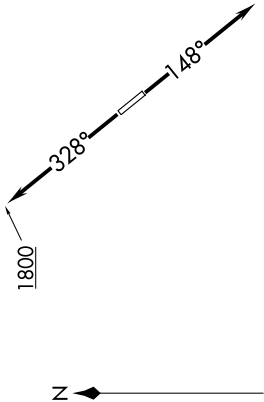
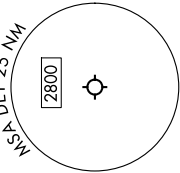
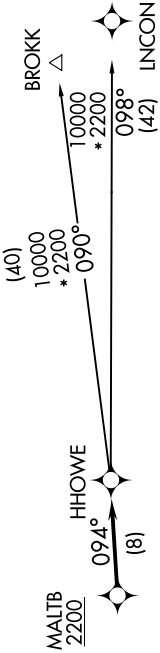


DETROIT DEP CON  
134.3 284.0  
ATIS  
124.875  
GND CON  
121.85  
DETROIT CITY TOWER  
121.3 257.8



RNAV-1 DME/DME/IRU or GPS.  
RADAR required.

TOP ALTITUDE:  
ASSIGNED BY ATC



NOTE: Turbojet departures at/above 10000, maintain 280K until advised by ATC.  
NOTE: BROKK TRANSITION: For use by flights filed at or below FL270, or as assigned by ATC.

TAKEOFF MINIMUMS:  
Rwy 15, 33: Standard.

NOTE: Chart not to scale.

DEPARTURE ROUTE DESCRIPTION

TAKEOFF RUNWAY 15: Climb on heading 148° or as assigned by ATC thence....  
TAKEOFF RUNWAY 33: Climb on heading 328° to 1800 then as assigned thence....  
....For RADAR vectors to cross MALTB at or above 2200, then on track 094° to HHOWE, then on (transition).  
Maintain ATC assigned altitude, expect filed altitude 10 minutes after departure.

BROKK TRANSITION (HHOWE4.BROKK):  
LINCON TRANSITION (HHOWE4.LINCON):