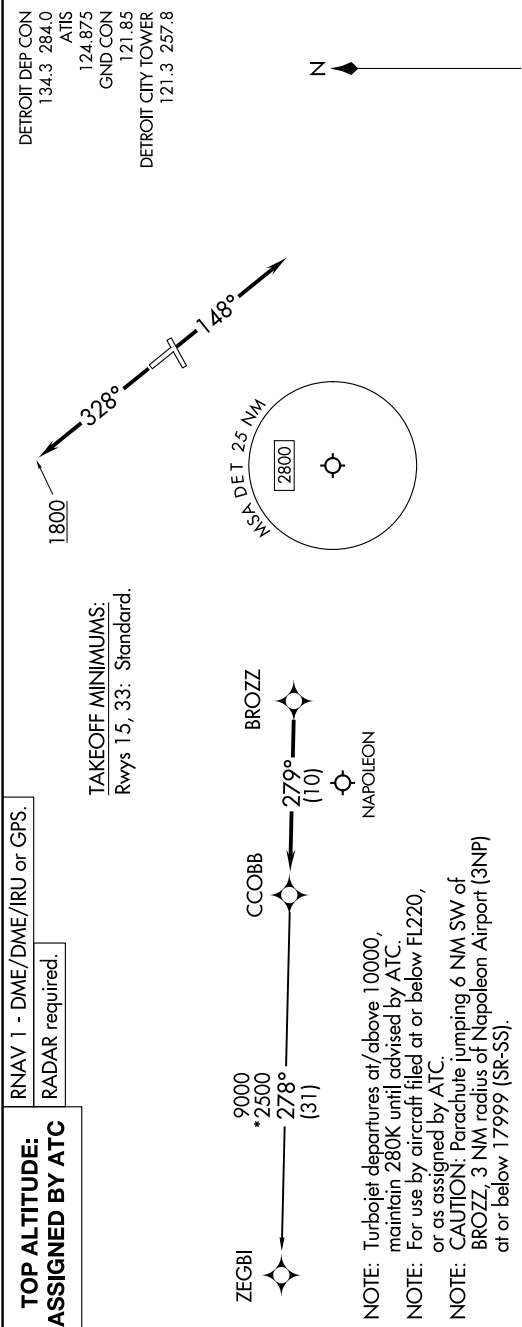


EC-1, 10 JUL 2025 to 07 AUG 2025



DEPARTURE ROUTE DESCRIPTION

TAKEOFF RUNWAY 15: Climb on heading 148° or as assigned by ATC, thence....  
TAKEOFF RUNWAY 33: Climb on heading 328° to 1800 then as assigned by ATC, thence....  
....for RADAR vectors to BROZZ, then on track 279° to CCOBB, then on (transition).  
Maintain ATC assigned altitude, expect filed altitude 10 minutes after departure.

ZEGBI TRANSITION (CCOBB3.ZEGBI):

EC-1, 10 JUL 2025 to 07 AUG 2025