
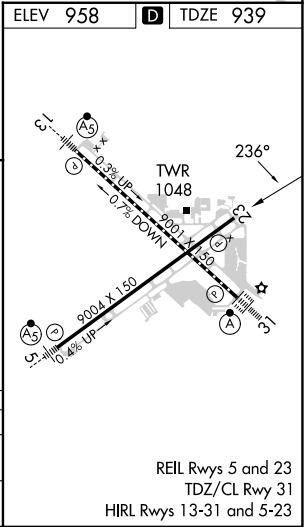
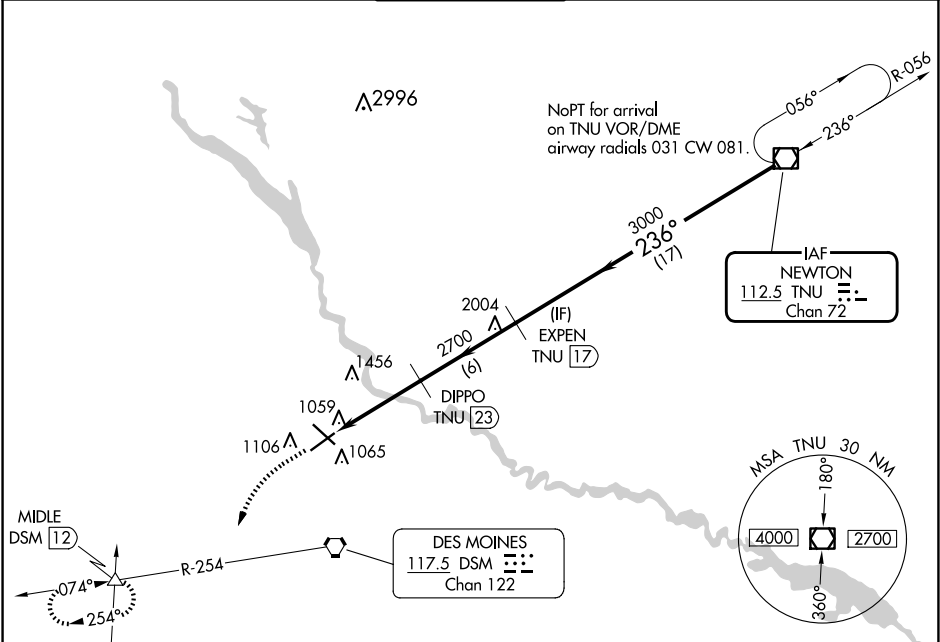


VOR/DME TNU	APP CRS	Rwy Idg	9004
112.5	236°	TDZE	939
Chan 72		Apt Elev	958

VOR RWY 23
DES MOINES INTL (DSM)

DME required.	MISSED APPROACH: Climb to 2000 then climbing left turn to 3000 on heading 200° and on DSM VORTAC R-254 direct MIDLE INT/DSM 12 DME and hold.
 Rwy 23 helicopter visibility reduction below 3/4 SM NA.	

ATIS 119.55	DES MOINES APP CON 123.9 307.15	DES MOINES TOWER 118.3 257.8	GND CON 121.9 348.6	CLNC DEL 134.15 317.55
----------------	------------------------------------	---------------------------------	------------------------	---------------------------



2000	3000	DSM R-254	MIDLE	EXPEN TNU 17	TNU VOR/DME
↑	hdg 200°		△		
			DIPPO TNU 23		
			TNU 28.5		
			≤ 2.95° TCH 56		
			2700		
			3000		
			236°		
			3000		
			5.5 NM	6 NM	17 NM
CATEGORY	A	B	C	D	
S-23	1720-1 781 (800-1)	1720-1¼ 781 (800-1¼)	1720-2½ 781 (800-2½)	781 (800-2½)	
CIRCLING	1720-1 762 (800-1)	1720-1¼ 762 (800-1¼)	1720-2½ 762 (800-2½)	1760-2½ 802 (900-2½)	