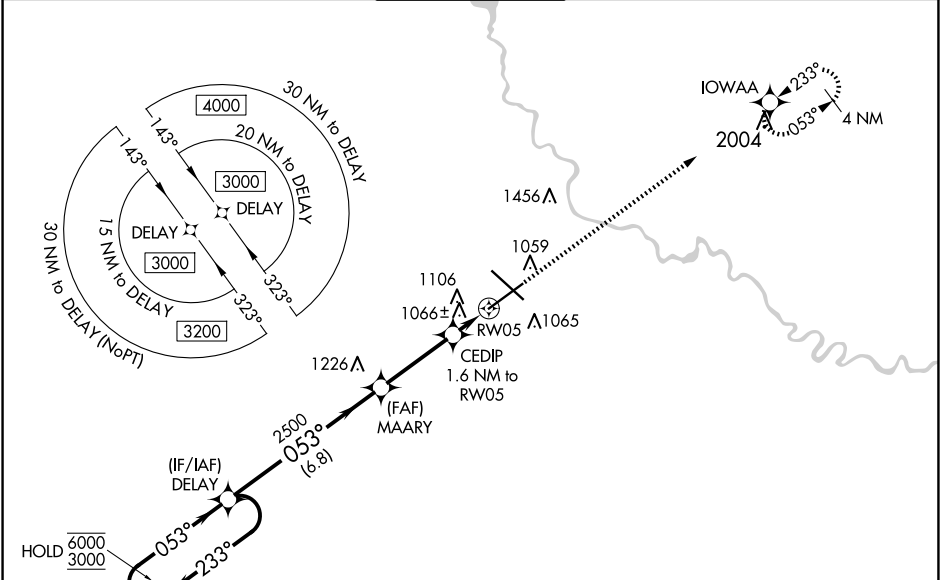


WAAS CH 69202 W05A	APP CRS 053°	Rwy Idg 9004 TDZE 931 Apt Elev 958
--	------------------------	---

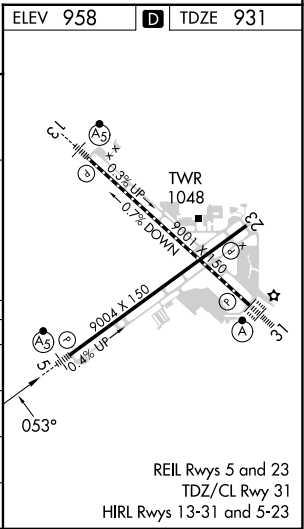
RNAV (GPS) RWY 5
DES MOINES INTL (DSM)

RNP APCH - GPS.	MALSR	MISSED APPROACH: Climb to 3100 direct IOWAA and hold.
<p>⚠ For uncompensated Baro-VNAV systems, LNAV/VNAV NA below -22°C or above 54°C. For inop ALS, increase LNAV/VNAV all Cats visibility to RVR 4500.</p> <p>*RVR 1800 authorized with use of FD or AP or HUD to DA.</p>		

ATIS 119.55	DES MOINES APP CON 123.9 307.15	DES MOINES TOWER 118.3 257.8	GND CON 121.9 348.6	CLNC DEL 134.15 317.55
-----------------------	---	--	-------------------------------	----------------------------------



ELEV 958					D TDZE 931				
VGSI and RNAV glidepath not coincident (VGSI Angle 3.00/TCH 55).					3100 IOWAA				
4 NM Holding Pattern					MAARY				
6000 233°					CEDIP 1.6 NM to RW05				
3000 053°					1.1 NM to RW05				
GP 3.00°					RW05				
TCH 55					1480				
6.8 NM					3.2 NM				
0.5					1.1 NM				
CATEGORY	A	B	C	D					
LPV DA*	1131/24				200 (200-½)				
LNAV/VNAV DA	1247/24				316 (300-½)				
LNAV MDA	1320/24 389 (400-½)		1320/35 389 (400-¾)						
CIRCLING	1420-1 462 (500-1)		1600-1¾ 642 (700-1¾)		1760-2½ 802 (900-2½)				



NC-3, 10 JUL 2025 to 07 AUG 2025

NC-3, 10 JUL 2025 to 07 AUG 2025