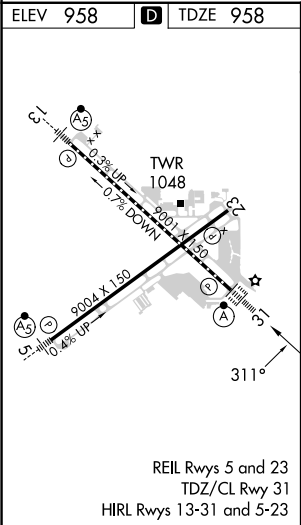
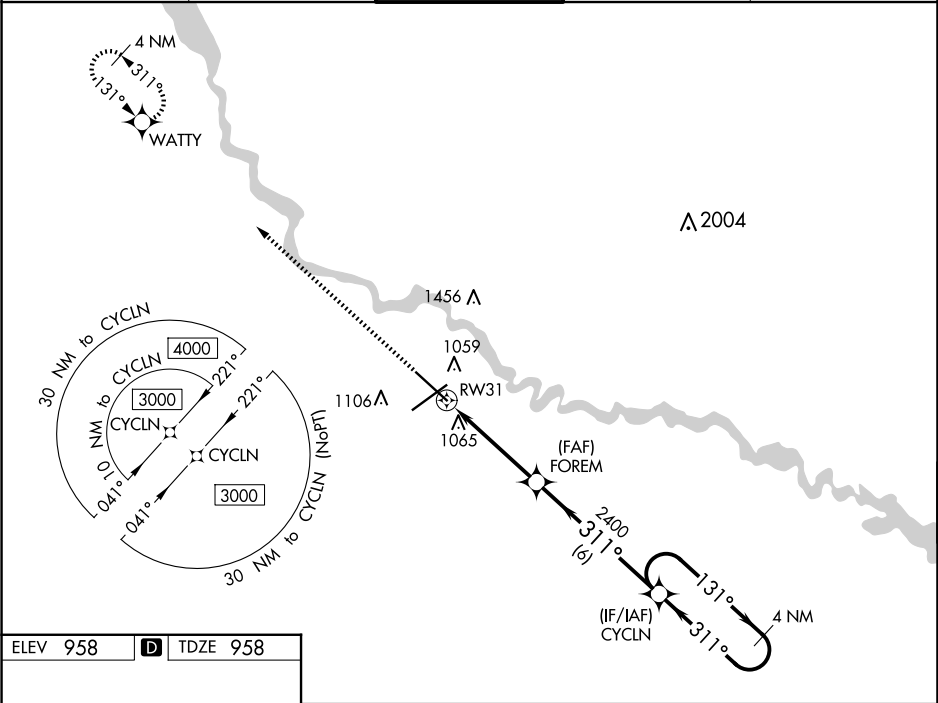




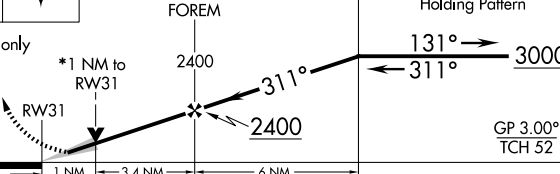

WAAS CH 78002 W31A	APP CRS 311°	Rwy Idg 9001 TDZE 958 Apt Elev 958
--	------------------------	---

RNAV (GPS) RWY 31

DES MOINES INTL (DSM)

RNP APCH - GPS.		ALSF-2	MISSED APPROACH: Climb to 3500 direct WATTY and hold.	
<div><div></div><div></div></div> For uncompensated Baro-VNAV systems, LNAV/VNAV NA below -20° or above 54°. For inop ALS, increase LNAV Cats C/D visibility to RVR 5500. Baro-VNAV and VDP NA when using Ankeny Rgnl altimeter setting.		<div><div></div><div></div></div>		
ATIS 119.55	DES MOINES APP CON 123.9 307.15	DES MOINES TOWER 118.3 257.8	GND CON 121.9 348.6	CLNC DEL 134.15 317.55



3500	WATTY				
					
*LNAV only		*1 NM to RW31			
					
CATEGORY	A	B	C	D	
LPV DA	1158/18 200 (200-½)				
LNAV/ VNAV DA	1354/35 396 (400-¾)				
LNAV MDA	1320/24	362 (400-½)	1320/35	362 (400-¾)	
 CIRCLING	1420-1	462 (500-1)	1600-1¾ 642 (700-1¾)	1760-2½ 802 (900-2½)	