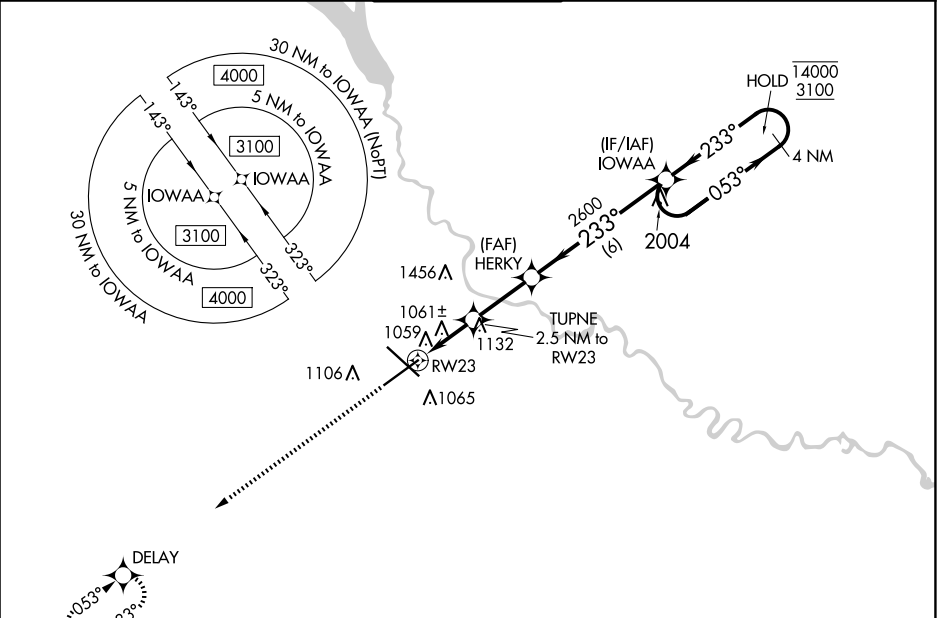


WAAS CH <b>97541</b> <b>W23A</b>	APP CRS <b>233°</b>	Rwy Idg TDZE Apt Elev	<b>9004</b> <b>940</b> <b>958</b>
--	------------------------	-----------------------------	---

RNAV (GPS) RWY 23

DES MOINES INTL (DSM)

RNP APCH - GPS.		MISSED APPROACH: Climb to 3000 direct DELAY and hold.		
<div>▼</div> <div>▲</div>	Rwy 23 helicopter visibility reduction below ¾ SM NA. For uncompensated Baro-VNAV systems, LNAV/VNAV NA below -20°C or above 54°C.			
ATIS 119.55	DES MOINES APP CON 123.9 307.15	DES MOINES TOWER 118.3 257.8	GND CON 121.9 348.6	CLNC DEL 134.15 317.55



3000 ↑	DELAY 	VGSI and RNAV glidepath not coincident (VGSI Angle 3.00/TCH 60).		
		IOWAA 4 NM Holding Pattern		
TUPNE 2.5 NM to RW23		HERKY 2600	053° → 14000 ← 233° 3100	
1 NM to RW23		2600	GP 3.00° TCH 56	
1 NM		6 NM		
CATEGORY	A	B	C	D
LPV DA	1263-1 323 (400-1)			
LNAV/ VNAV DA	1220-7/8 280 (300-7/8)			
LNAV MDA	1320-1 380 (400-1)			
CIRCLING	1420-1 462 (500-1)	1600-1¾ 642 (700-1¾)	1760-2½ 802 (900-2½)	

