

DES MOINES, IOWA

AL-117 (FAA)

24025

WAAS CH 72602 W13A	APP CRS 131°	Rwy Idg 9001 TDZE 922 Apt Elev 958
--	------------------------	---

RNAV (GPS) RWY 13
DES MOINES INTL (DSM)

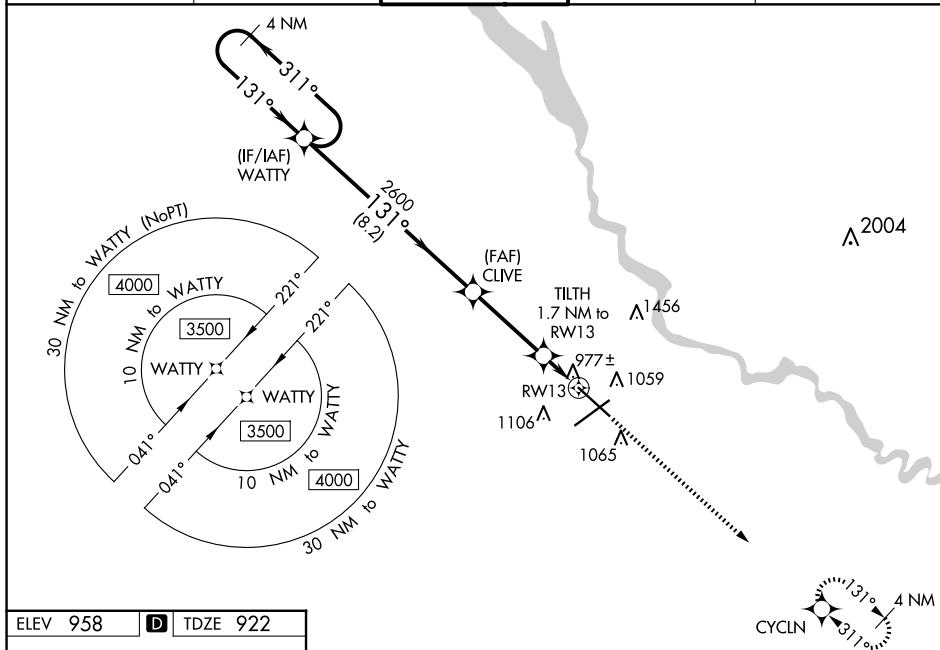
T For uncompensated Baro-VNAV systems, LNAV/VNAV NA below -19°C (-2°F) or above 54°C (130°F). DME/DME RNP-0.3 NA.
A For inop ALS, increase LNAV/VNAV all Cats visibility to RVR 4000 and LNAV Cats C and D visibility to RVR 4500.
 #RVR 1800 authorized with use of FD or AP or HUD to DA.

MALSR

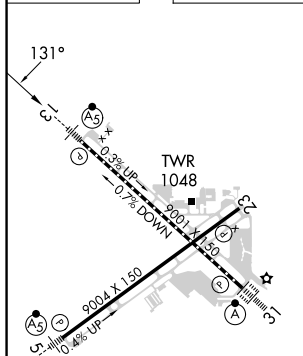


MISSED APPROACH: Climb to 3000 direct CYCLN and hold.

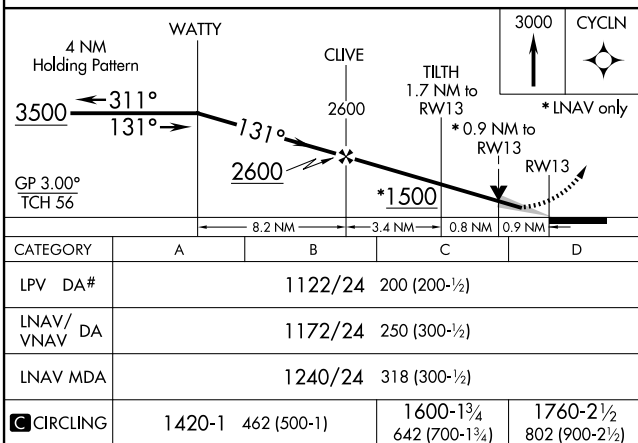
ATIS 119.55	DES MOINES APP CON 123.9 307.15	DES MOINES TOWER 118.3 257.8	GND CON 121.9 348.6	CLNC DEL 134.15 317.55
----------------	------------------------------------	---------------------------------	------------------------	---------------------------



ELEV 958	D	TDZE 922
----------	----------	----------



REIL Rwy 5 and 23
TDZ/CL Rwy 31
HIRL Rwy 13-31 and 5-23



DES MOINES, IOWA

Amdt 2A 29MAR18

41°32'N-93°40'W

DES MOINES INTL (DSM)

RNAV (GPS) RWY 13

NC-3, 10 JUL 2025 to 07 AUG 2025