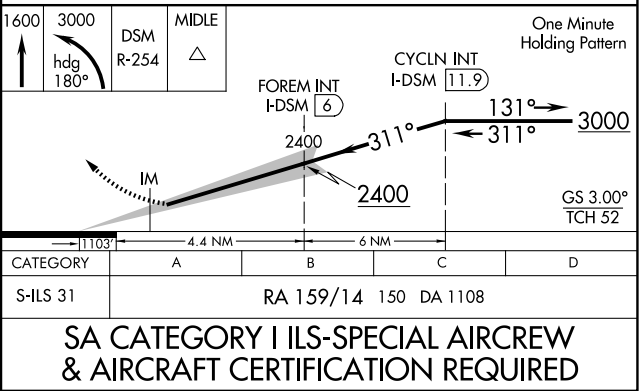
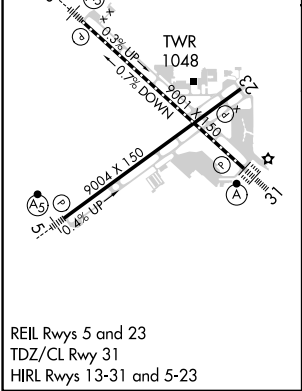
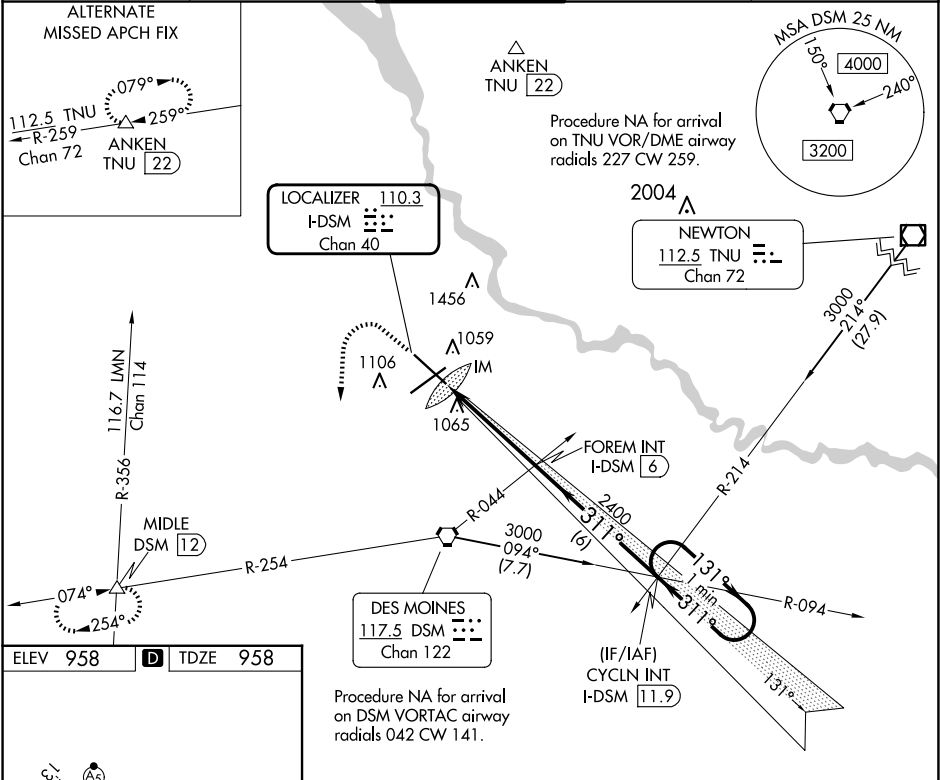


LOC/DME I-DSM <b>110.3</b> Chan <b>40</b>	APP CRS <b>311°</b>	Rwy Ldg TDZE <b>958</b> Apt Elev <b>958</b>	<b>9001</b>
---	------------------------	---	-------------

ILS RWY 31 (SA CAT I)  
DES MOINES INTL (DSM)

Requires specific OPSPEC, MSPEC, or LOA approval and use of HUD to DH.	ALSF-2 	MISSED APPROACH: Climb to 1600 then climbing left turn to 3000 on heading 180° and on DSM VORTAC R-254 to MIDDLE INT/12 DME and hold.
--	------------	---

ATIS <b>119.55</b>	DES MOINES APP CON <b>123.9 307.15</b>	DES MOINES TOWER <b>118.3 257.8</b>	GND CON <b>121.9 348.6</b>	CLNC DEL <b>134.15 317.55</b>
-----------------------	---	--	-------------------------------	----------------------------------



NC-3, 10 JUL 2025 to 07 AUG 2025

NC-3, 10 JUL 2025 to 07 AUG 2025