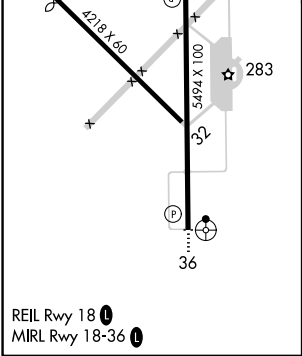
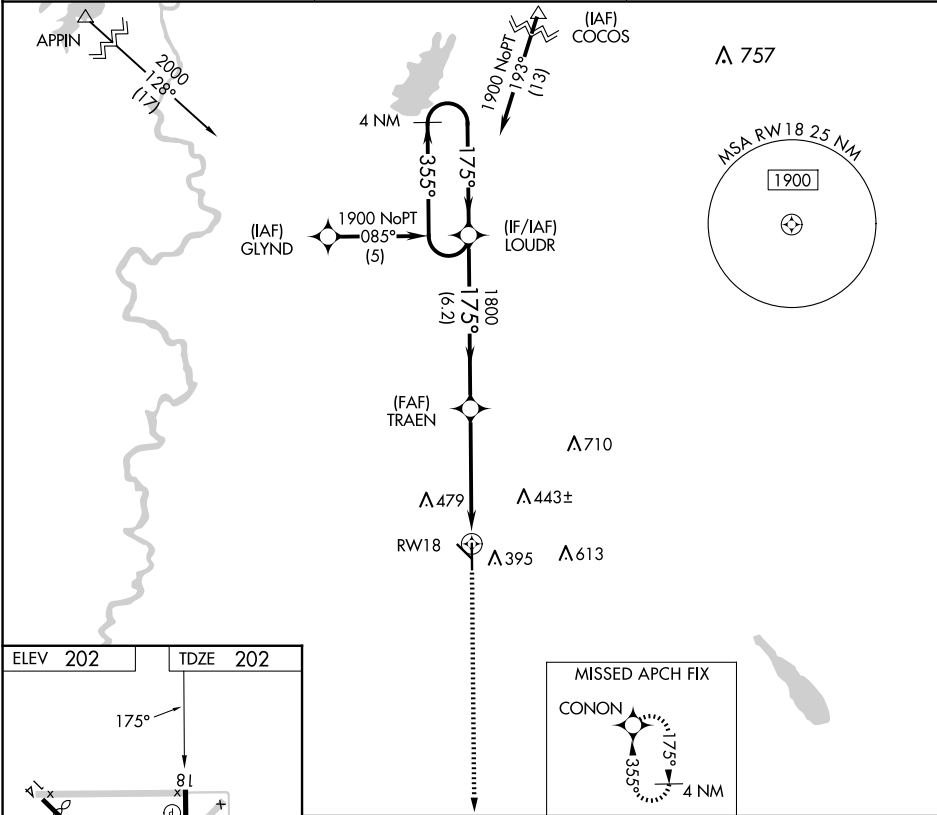


APP CRS	Rwy Idg	5494
175°	TDZE	202
	Apt Elev	202

RNAV (GPS) RWY 18
BEAUREGARD RGNL (DRI)

<div><div></div><div></div></div> <div>DME/DME RNP-0.3 NA. Visibility reduction by helicopters NA. When local altimeter setting not received, use Fort Polk altimeter setting and increase all MDAs 60 feet and visibility LNAV Cats C/D and Circling Cats C/D ¼ SM.</div>	MISSED APPROACH: Climb to 1700 direct CONON and hold.
--	---

AWOS-3PT 118.225	POLK APP CON 123.7 261.3	UNICOM 122.8 (CTAF) 0
---------------------	-----------------------------	--------------------------



1700	CONON	VGSI and descent angles not coincident (VGSI Angle 3.00/TCH 50).		4 NM Holding Pattern
		TRAEN	1800	1900
		RW18	175°	355°
			3.04° TCH 40	175°
			4.8 NM	6.2 NM
CATEGORY	A	B	C	D
LNAV MDA	680-1	478 (500-1)	680-1¼ 478 (500-1¼)	680-1½ 478 (500-1½)
CIRCLING	720-1	518 (600-1)	780-1½ 578 (600-1½)	1000-2½ 798 (800-2½)

SC-4, 10 JUL 2025 to 07 AUG 2025

SC-4, 10 JUL 2025 to 07 AUG 2025