

NDB DXB	APP CRS	Rwy Idg	5494
385	354°	TDZE	197
		Apt Elev	202

NDB RWY 36
BEAUREGARD RGNL (DRI)

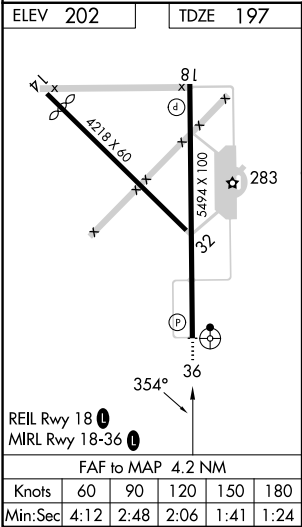
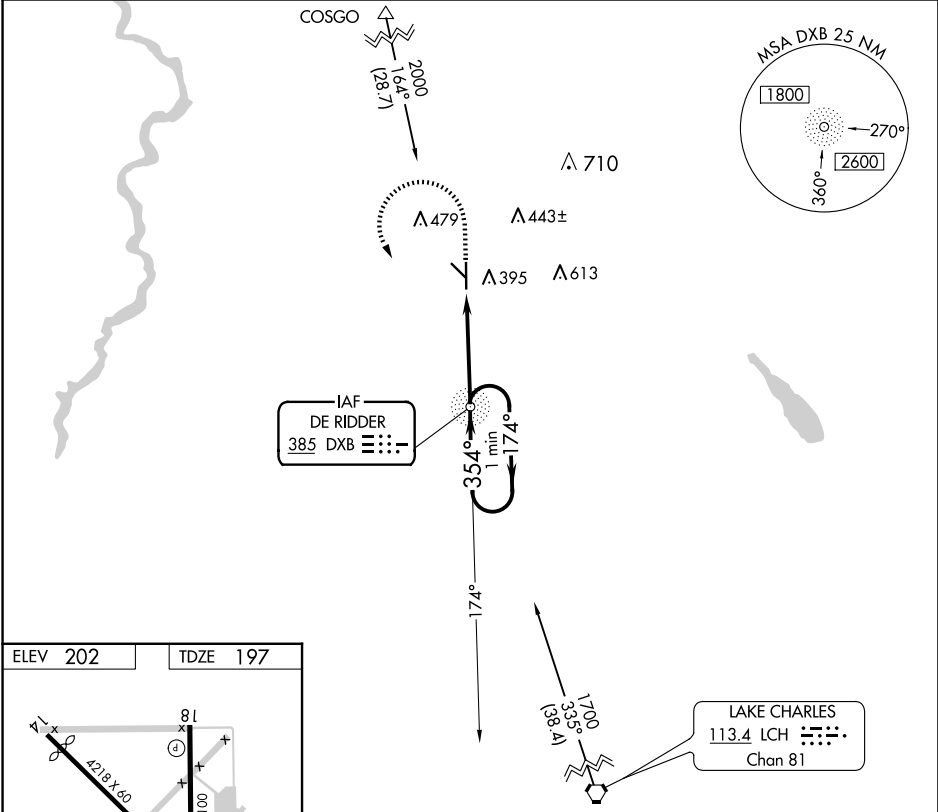
⚠ Inoperative table does not apply. Visibility reduction by helicopters NA. When local altimeter setting not received, use Fort Polk altimeter setting and increase all MDAs 60 feet and S-36 visibility Cat D 1/2 SM and Circling Cats C/D 1/4 SM.

⚠ NA

ODALS

MISSED APPROACH: Climb to 1000 then climbing left turn to 1700 direct DXB NDB and hold.

AWOS-3PT	POLK APP CON	UNICOM
118.225	123.7 261.3	122.8 (CTAF) 0



1000	1700	DXB	DXB NDB	One Minute Holding Pattern
VGSI and descent angles not coincident (VGSI Angle 3.00/TCH 50).				
CATEGORY	A	B	C	D
S-36	700-1 503 (500-1)		700-1½ 503 (500-1½)	
CIRCLING	720-1 518 (600-1)		780-1½ 1000-2½ 578 (600-1½) 798 (800-2½)	

SC-4, 10 JUL 2025 to 07 AUG 2025

SC-4, 10 JUL 2025 to 07 AUG 2025