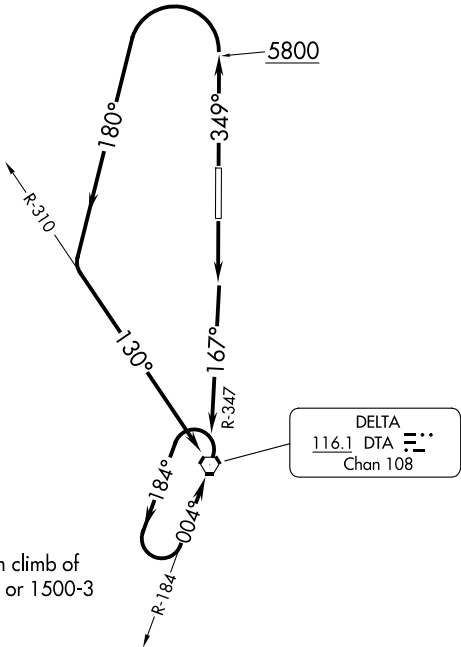


SALT LAKE CENTER
127.825 239.025



TAKEOFF MINIMUMS

- Rwy 17: Standard with minimum climb of 317' per NM to 6200, or 1500-3 for VCOA.
- Rwy 35: Standard.

TAKEOFF OBSTACLE NOTES

- Rwy 17: Lighting beginning 41' from DER, 76' right of centerline, 3' AGL/4754' MSL.
Tree 609' from DER, 596' right of centerline, 4780' MSL.
- Rwy 35: Vegetation, lighting beginning 9' from DER, 77' right of centerline, up to 4763' MSL.
Vegetation 47' from DER, 349' left of centerline, 4763' MSL.
Fence 76' from DER, 390' right of centerline, 10' AGL/4769' MSL.
Vehicles on road 177' from DER, 477' right of centerline, 4770' MSL.
Vehicles on road 227' from DER, 458' right of centerline, 4771' MSL.

NOTE: Chart not to scale.

DEPARTURE ROUTE DESCRIPTION

TAKEOFF RUNWAY 17: Climb on DTA VORTAC R-347 to DTA VORTAC, thence. . .

TAKEOFF RUNWAY 35: Climb on heading 349° to 5800, then climbing left turn heading 180° and DTA VORTAC R-310 to DTA VORTAC, thence. . .

. . . continue climb in DTA VORTAC holding pattern to cross DTA VORTAC at or above MCA/MEA for route of flight.

VCOA RUNWAY 17: Obtain ATC approval for VCOA when requesting IFR clearance. Climb in visual conditions to cross Delta Muni airport southbound at or above 6200, then on DTA VORTAC R-347 to DTA VORTAC, thence. . .

. . . continue climb in DTA VORTAC holding pattern to cross DTA VORTAC at or above MCA/MEA for route of flight.