

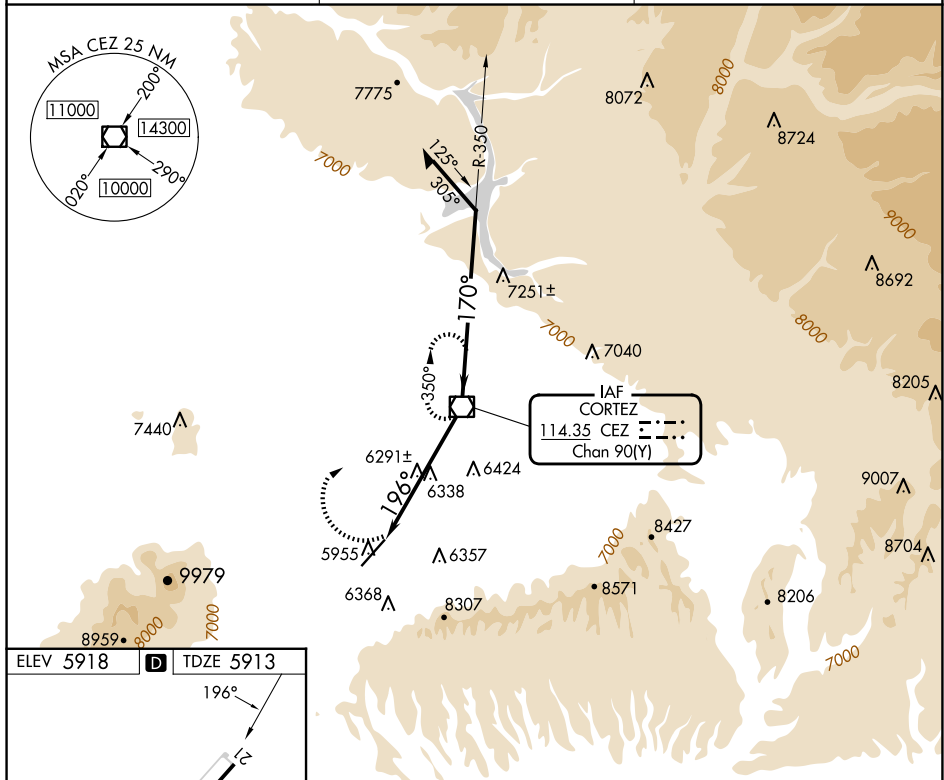
VOR/DME CEZ 114.35 Chan 90 (Y)	APP CRS 196°	Rwy Ldg 7205 TDZE 5913 Apt Elev 5918
--	------------------------	---

VOR RWY 21
CORTEZ MUNI (CEZ)

CAUTION: Highway lights located between facility and runway are aligned with approach area. Rwy 21 helicopter visibility reduction below $\frac{3}{4}$ SM NA. Circling NA southeast of Rwy 3-21.

MISSED APPROACH: Climbing right turn to 9800 direct to CEZ VOR/DME and hold.

ASOS 135.625	DENVER CENTER 118.575 348.7	UNICOM 122.8 (CTAF) 0
------------------------	---------------------------------------	--



ELEV 5918 **D** TDZE 5913

196°

7205 X 100

REIL Rwy 3 and 21 **1**

MIRA Rwy 3-21 **1**

FAF to MAP 5.5 NM

Knots	60	90	120	150	180
Min:Sec	5:30	3:40	2:45	2:12	1:50

Diagram illustrating the 5.5 NM radius of action for a VOR/DME station (CEZ). The diagram shows a VOR/DME symbol, a 5.5 NM radius, and a 3.49° TCH 50. It also shows a 196° bearing to a 9800 frequency and a 170° bearing to an 8000 frequency, with a 350° bearing to a 9800 frequency. A note says "Remain within 10 NM".