

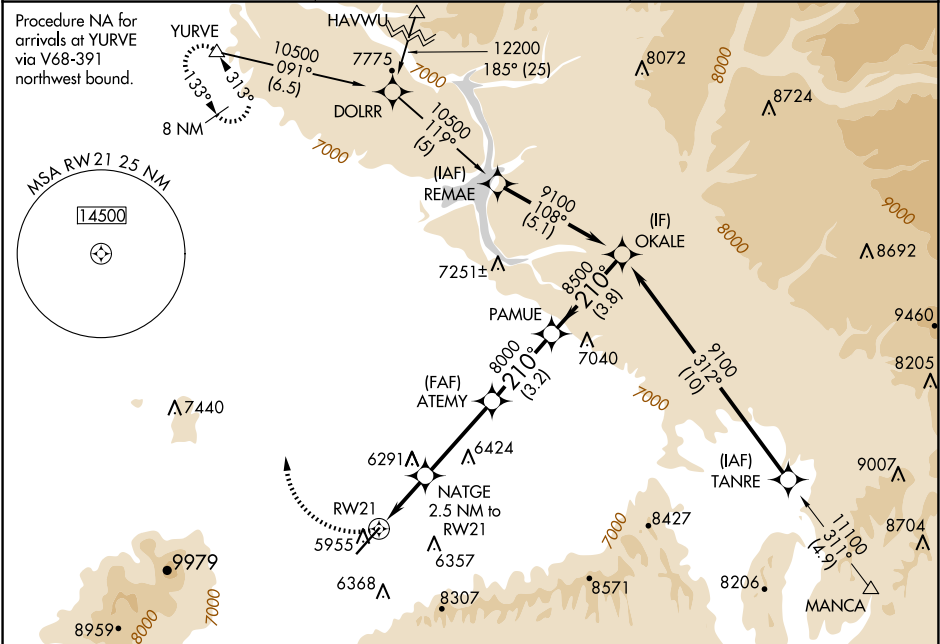
APP CRS	Rwy Ldg	7205
210°	TDZE	5913
	Apt Elev	5918

RNAV (GPS) Y RWY 21

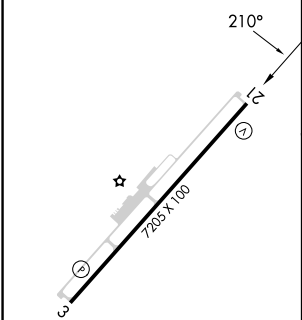
CORTEZ MUNI (C/EZ)

<div><div></div><div></div></div> <div>DME/DME RNP-0.3 NA. When VGSI inop, procedure NA at night. Circling NA southeast of Rwy 3-21.</div>	MISSED APPROACH: Climbing right turn to 9800 direct YURVE and hold.
--	---

ASOS 135.625	DENVER CENTER 118.575 348.7	UNICOM 122.8 (CTAF) 0
-----------------	--------------------------------	---------------------------------



ELEV 5918	D	TDZE 5913
-----------	----------	-----------



REIL Rws 3 and 21 0
MIRL Rwy 3-21 0

CAUTION: Highway lights located between FAF and runway are aligned with approach area.			
9800	YURVE	VGSI and descent angles not coincident (VGSI Angle 3.00/TCH 50).	
	NATGE	ATEMY	OKALE
	2.5 NM to RW21		
	≤ 3.15°		
	TCH 50		
	6740	8000	8500
	2.5 NM	3.6 NM	3.2 NM
			3.8 NM
CATEGORY	A	B	C
LNAV MDA	6560-1	647 (700-1)	6560-1¾
			647 (700-1¾)
CIRCLING	6560-1	6680-2	6800-2¾
	642 (700-1)	762 (800-2)	882 (900-2¾)
			7060-3
			1142 (1200-3)
			D
			6560-2
			647 (700-2)