

DEL RIO, TEXAS

24305

VOR/DME RWY 31C

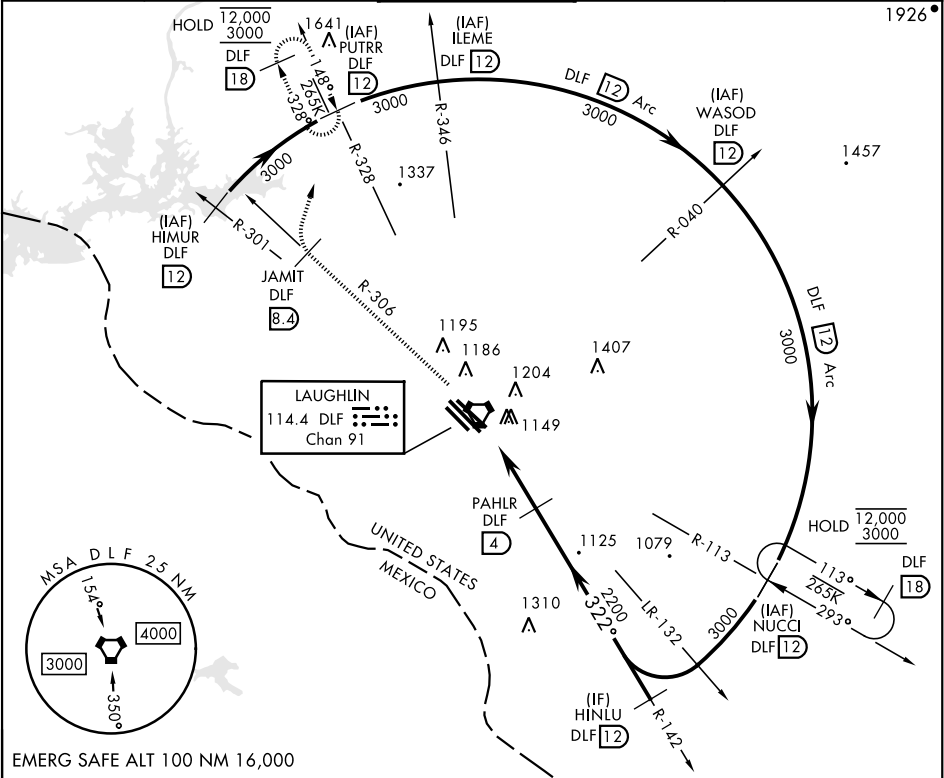
VORTAC DLF <b>114.4</b> Chan <b>91</b>	APCH CRS <b>322°</b>	Rwy Idg <b>8852</b> TDZE <b>1079</b> Arpt Elev <b>1082</b>
--	-------------------------	--

[USAF]

LAUGHLIN AFB (KDLF)

**V** \*Circling not authorized in sector SW of Rwy 13R-31L. MISSED APPROACH: Climb to 3000 on DLF VORTAC R-306 to 8.4 DME (JAMIT), then turn right to intercept DLF R-328 to 12 DME (PUTRR), and hold.

ATIS ★ <b>114.4 269.9</b>	DEL RIO APP CON <b>119.6 259.1</b>	TOWER ★ <b>125.2 307.375</b>	GND CON <b>275.8</b>	CLNC DEL <b>120.5 335.8</b>
------------------------------	---------------------------------------	---------------------------------	-------------------------	--------------------------------



EMERG SAFE ALT 100 NM 16,000

ELEV <b>1082</b>	TDZE <b>1079</b> Rwy 31L Idg 6241'	3000 DLF R-306	JAMIT R-306 DLF <b>8.4</b>	PUTRR R-328 DLF <b>12</b>	HINLU DLF <b>12</b>
CATEGORY	A	B	C	D	E
S-31C	1420-1		341	(400-1)	
<b>C</b> CIRCLING*	1500-1 418 (500-1)	1540-1 458 (500-1)	1700-1¾ 618 (700-1¾)	1700-2 618 (700-2)	1740-2¼ 658 (700-2¼)

DEL RIO, TEXAS

29°22'N-100°47'W

LAUGHLIN AFB (KDLF)

Amtd 4 20APR23

VOR/DME RWY 31C

SC-3, 10 JUL 2025 to 07 AUG 2025

SC-3, 10 JUL 2025 to 07 AUG 2025