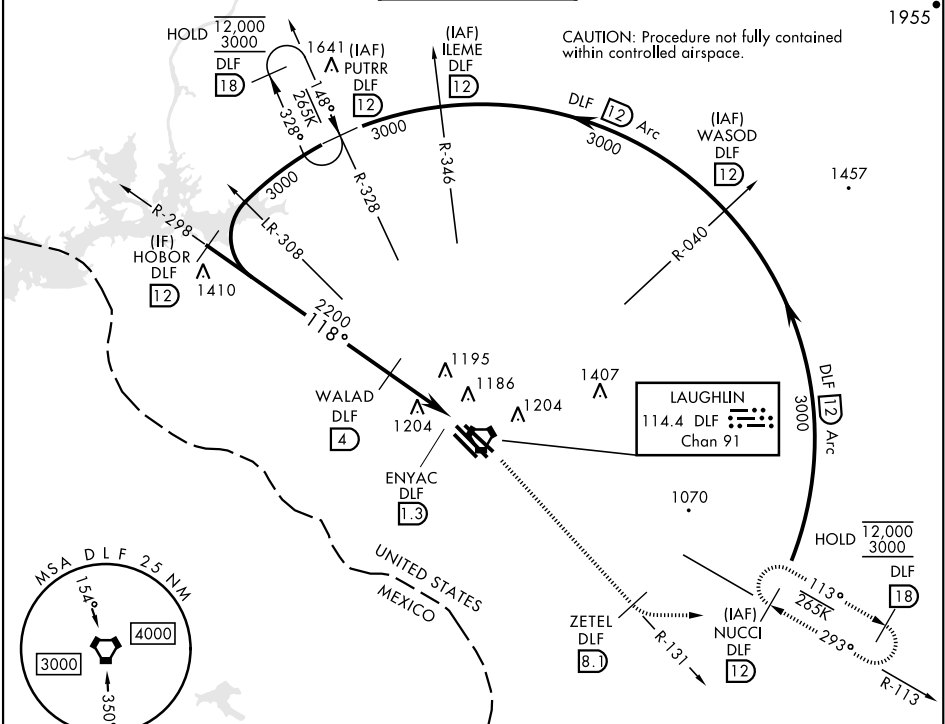


VOR/DME RWY 13C

VORTAC DLF 114.4 Chan 91	APCH CRS 118°	Rwy Idg 8852 TDZE 1082 Arpt Elev 1082	[USAF]	LAUGHLIN AFB (KDLF)
▼* When ALS inop, increase CAT AB RVR to 55 and vis to 1 mile, CAT CDE RVR to 60 and vis to 1 1/2 miles. ** Circling not authorized in sector SW of Rwy 13R-31L.			ALSF-1 A1	MISSED APPROACH: Climb to 3000 on DLF VORTAC R-131 to 8.1 DME (ZETEL), then turn left to intcp DLF R-113 to 12 DME (NUCCI) and hold.
ATIS ★ 114.4 269.9	DEL RIO APP CON 119.6 259.1	TOWER ★ 125.2 307.375	GND CON 275.8	CLNC DEL 120.5 335.8



EMERG SAFE ALT 100 NM 16,000

VGSI and descent angles not coincident.

HOBOR DLF 12

3000

118°

2200

WALAD DLF 4

3.30°

TCH 38

0.4

2.7 NM

ZETEL DLF 8.1

NUCCI R-113 DLF 12

118°

DEL 118°

1267

TWR 1199

8816 x 150

8852 x 150

511

51C

31C

ELEV	1082	TDZE	1082		
Rwy 31L Idg 6241'					
CATEGORY	A	B	C	D	E
S-13C *	1480/24 398 (400-1/2)		1480/40	398	(400-3/4)
CIRCLING **	1500-1 418 (500-1)	1540-1 458 (500-1)	1700-1 3/4 618 (700-1 3/4)	1700-2 618 (700-2)	1740-2 1/4 658 (700-2 1/4)

MIRL Rwy 13R-31L
HIRL Rwy 13C-31C, 13L-31R

VOR/DME RWY 13C

SC-3, 10 JUL 2025 to 07 AUG 2025

SC-3, 10 JUL 2025 to 07 AUG 2025