

RNAV (GPS) B

APCH CRS	Rwy ldg	N/A
340°	TDZE	N/A
	Arprt Elev	1082

- (USAF)

LAUGHLIN AFB (KDLF)

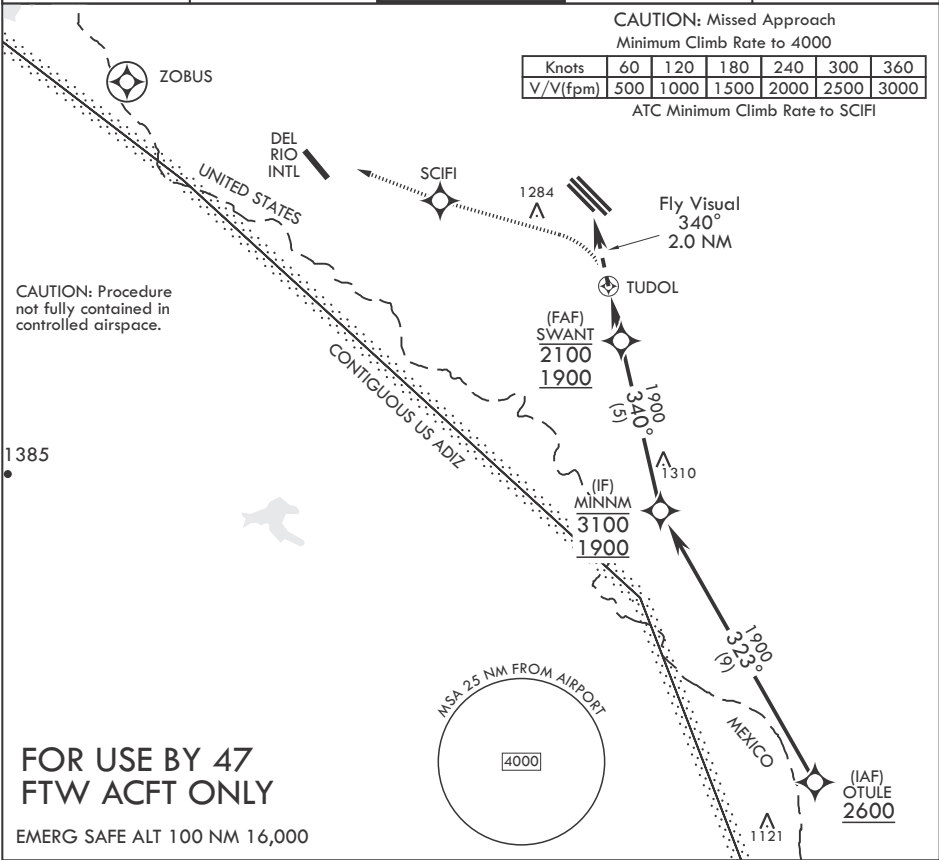
RNP APCH - GPS	MISSED APPROACH: Climbing left turn to 4000 direct ZOBUS, cross SCIFI at 4000, expect radar vectors.
RADAR required	
* Circling not authorized in sector NE of Rwy 13R-31L.	

ATIS★ 114.4 269.9	DEL RIO APP CON 119.6 259.1	TOWER★ 125.2 307.375	GND CON 275.8	CLNC DEL 120.5 335.8
----------------------	--------------------------------	-------------------------	------------------	-------------------------

CAUTION: Missed Approach  
Minimum Climb Rate to 4000

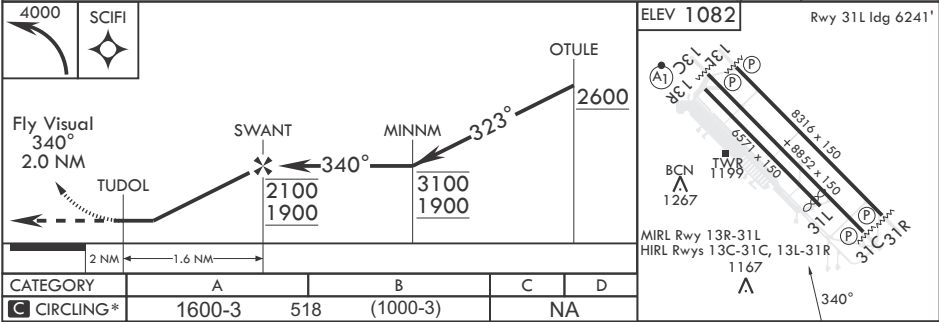
Knots	60	120	180	240	300	360
V/V(fpm)	500	1000	1500	2000	2500	3000

ATC Minimum Climb Rate to SCIFI



FOR USE BY 47  
FTW ACFT ONLY

EMERG SAFE ALT 100 NM 16,000



RNAV (GPS) B

SC-3, 10 JUL 2025 to 07 AUG 2025

SC-3, 10 JUL 2025 to 07 AUG 2025