

RNAV (GPS) RWY 31C

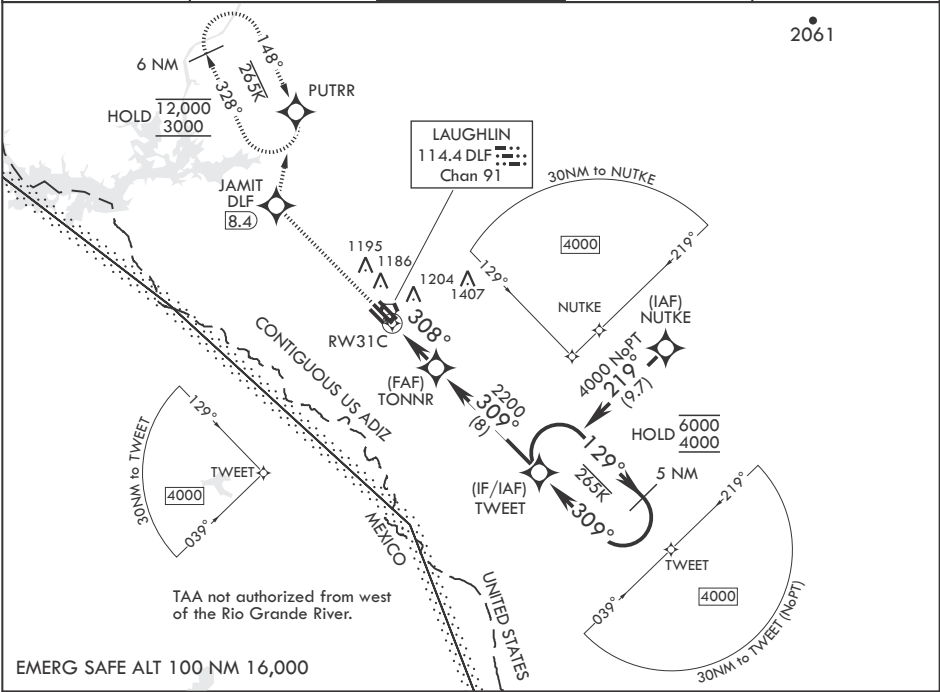
	31C	31L	31R
APCH CRS	308°		
Rwy Idg	8852	6241	8316
TDZE	1079	1080	1078
Arprt Elev	1082		

- (USAF)

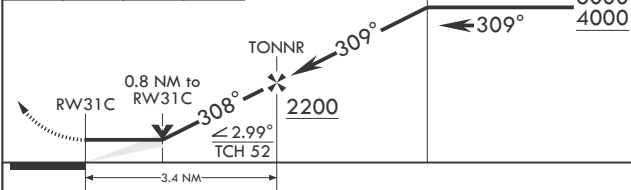
LAUGHLIN AFB (KDLF)

RNP APCH - GPS	MISSED APPROACH: Climb to 3000 direct JAMIT, then track 005° to PUTRR and hold.
* Circling not authorized SW of Rwy 13R-31L.	

ATIS★ 114.4 269.9	DEL RIO APP CON 119.6 259.1	TOWER★ 125.2 307.375	GND CON 275.8	CLNC DEL 120.5 335.8
----------------------	--------------------------------	-------------------------	------------------	-------------------------

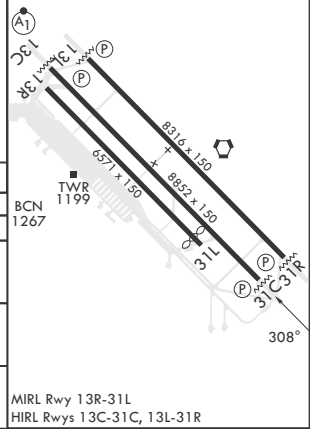


3000	JAMIT	tr 005°	PUTRR
5 NM Holding Pattern			
TWEET 129° 6000 4000			



ELEV 1082	TDZE 31C 1079
Rwy 31L Idg 6241'	TDZE 31L 1080
	TDZE 31R 1078

CATEGORY	A	B	C	D	E
LNAV MDA	1380-1 301 (300-1)		1380-7/8 301 (300-7/8)		
SIDESTEP31R	1380-1 302 (300-1)		1380-1 1/2 302 (300-1 1/2)	1380-2 302 (300-2)	
SIDESTEP31L	1420-1 340 (400-1)		1420-1 1/2 340 (400-1 1/2)	1420-2 340 (400-2)	
CIRCLING*	1500-1 418 (500-1)	1540-1 458 (500-1)	1700-1 1/4 618 (700-1 1/4)	1700-2 618 (700-2)	1740-2 1/4 658 (700-2 1/4)



RNAV (GPS) RWY 31C

SC-3, 10 JUL 2025 to 07 AUG 2025

SC-3, 10 JUL 2025 to 07 AUG 2025