


RNAV (GPS) RWY 13C

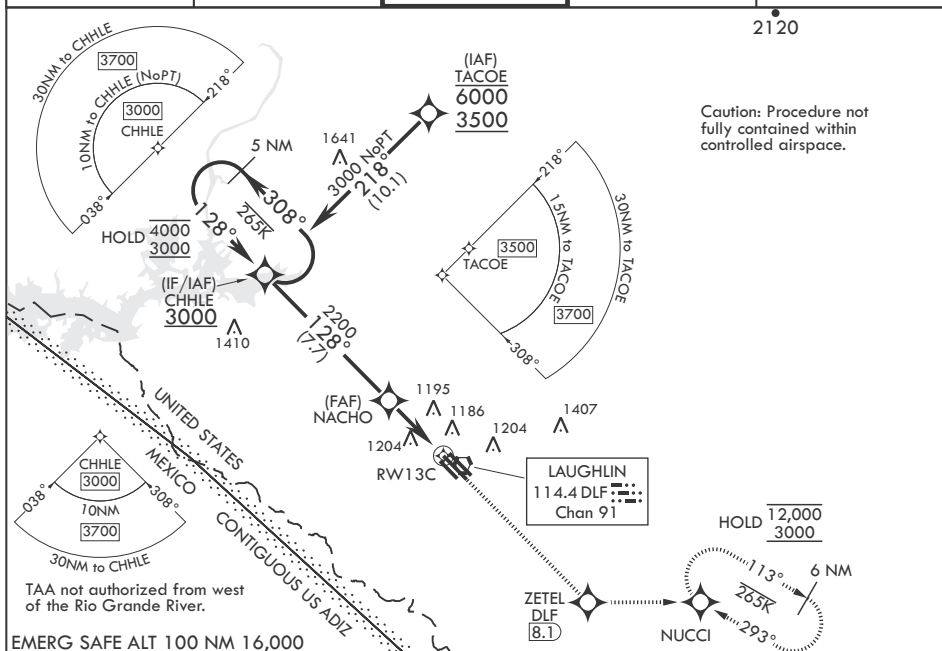
LAUGHLIN AFB (KDLF)

		13C	13L	13R
APCH CRS	Rwy Idg	8852	8316	6571
128°	TDZE	1082	1078	1077
	Arpt Elev	1082		

- (USAF)

<p>RNP APCH - GPS</p> <p>V * When ALS inop, increase CAT AB RVR to 55 and vis to 1 mile, CAT CDE vis to 1 1/4 miles.</p> <p>** Circling SW of Rwy 13R-31L not authorized.</p>	<p>Rwy 13C</p> <p>ALSF-1</p> 	<p>MISSED APPROACH: Climb to 3000 direct ZETEL, then track 083° to NUCCI and hold.</p>
--	--	--

ATIS★ 114.4 269.9	DEL RIO APP CON 119.6 259.1	TOWER★ 125.2 307.375	GND CON 275.8	CLNC DEL 120.5 335.8
----------------------	--------------------------------	-------------------------	------------------	-------------------------



5 NM Holding Pattern
308°
CHHLE

3000

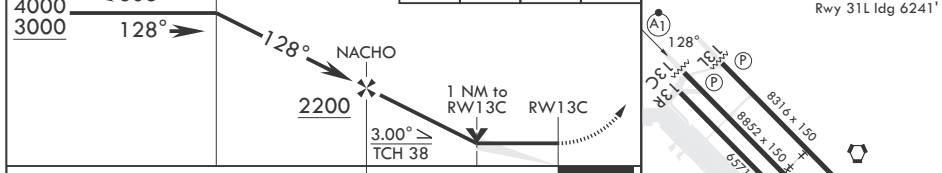
ZETEL

tr 083°

NUCCI

ELEV 1082

TDZE 13C 1082
TDZE 13L 1078
TDZE 13R 1077



CATEGORY	A	B	C	D	E
LNAV MDA*	1440/24	358 (400-½)	1440/30	358	400-¾
SIDESTEP13L	1440-1	362 (400-1)	1440-1½ 362 (400-1½)	1440-2	362 (400-2)
SIDESTEP13R	1480-1	403 (400-1)	1480-1½ 403 (400-1½)	1480-2	403 (400-2)
C CIRCLING**	1500-1 418 (500-1)	1540-1 458 (500-1)	1700-1¾ 618 (700-1¾)	1700-2 618 (700-2)	1740-2¼ 658 (700-2¼)

MIRL Rwy 13R-31L
MIRL Rwy 13C-31C, 13L-31R

DEL RIO, TEXAS

29°22'N - 100°47'W

LAUGHLIN AFB (KDLEF)

Amdt 4 20FEB25

RNAV (GPS) RWY 13C

SC-3, 10 JUL 2025 to 07 AUG 2025